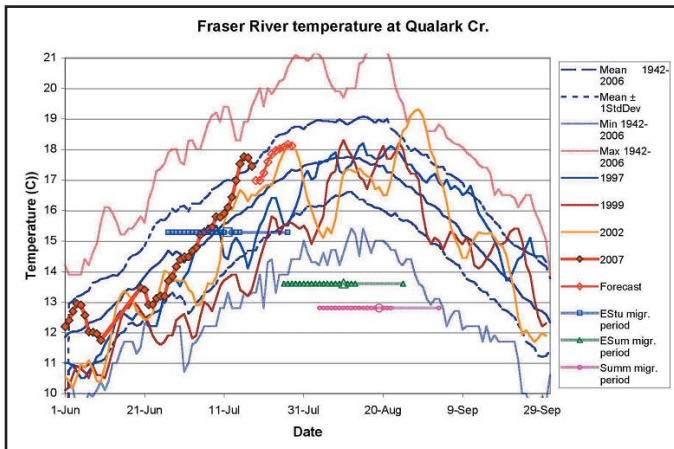


## FRASER SALMON UPDATE

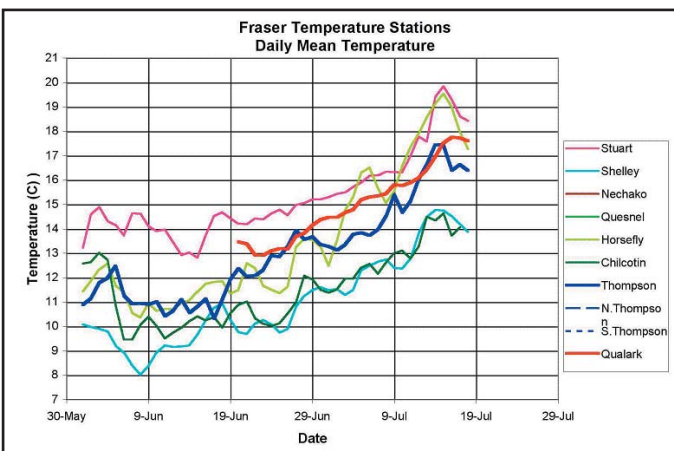
By Pete Nicklin, Watershed Stock Management Coordinator FRAFS

### WATER CONDITIONS

Water conditions in the Fraser are satisfactory for sockeye migration from a temperature point of view, and higher than average (but not extreme) from a discharge point of view. The following graphs show the 2007 conditions in comparison to other years.

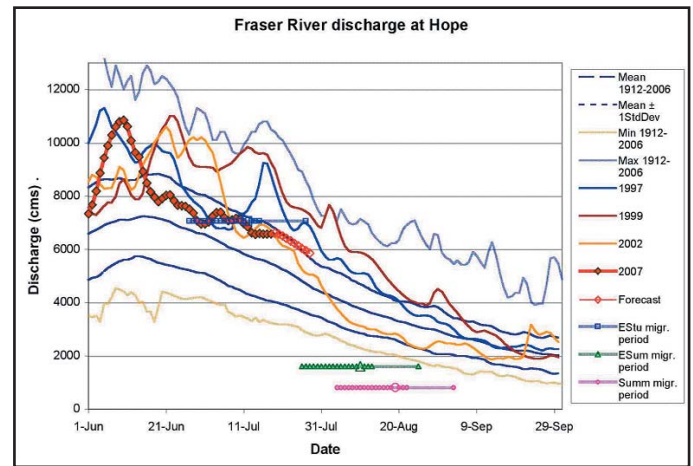


This graph shows the Fraser River temperatures at Qualark Creek (Lower Fraser). The line with the diamonds shows the 2007 temperatures. The open diamond portion of the line shows the forecast temperatures. The current temperature is below 17 degrees, but forecast to climb above 18 degrees over the next several days.



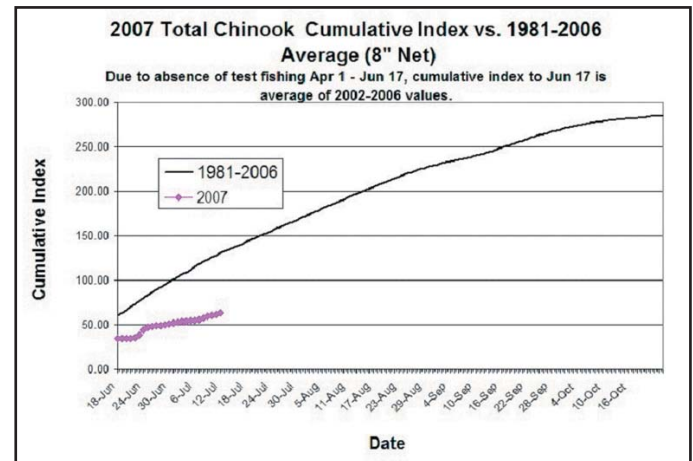
This graph shows the 2007 daily mean temperatures at various temperature stations throughout the Fraser watershed. Temperatures are on an increasing trend, but currently below 18 degrees Celsius.

The next graph shows the Fraser River discharge at Hope. The line with the diamonds is the 2007 discharge. Current discharge is approximately 6100 cubic metres per second (cms) and forecast to drop below 6000 cms by the end of July (forecast shown by the open diamond line).



### FRASER CHINOOK

The Albion Test Fishery Cumulative catch results for 2007 continue at levels below the 1981 to 2006 average. Seals are a problem at the Albion (and Whonock) test fishery site because they are picking fish off the net.



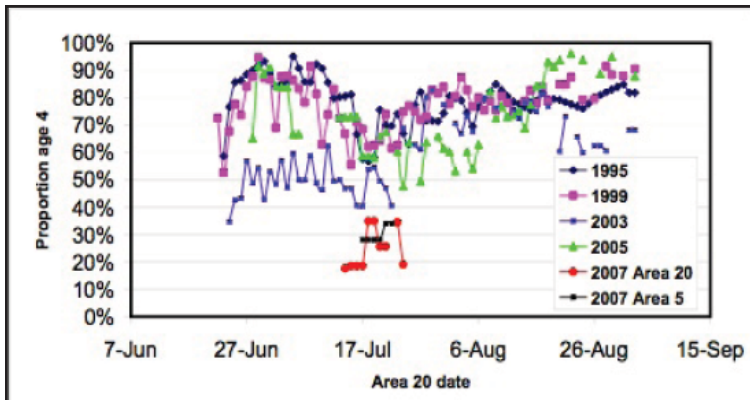
The cumulative test fishery catch at Albion for 2007 is the bottom line in this graph. The top line is the average from 1981 to 2006. The cumulative catch is tracking at about half the 1981-2006 average. A web link to the Albion Test Fishery page on the DFO website can be found in the General Information section of the Watershed Talk.

### FRASER SOCKEYE

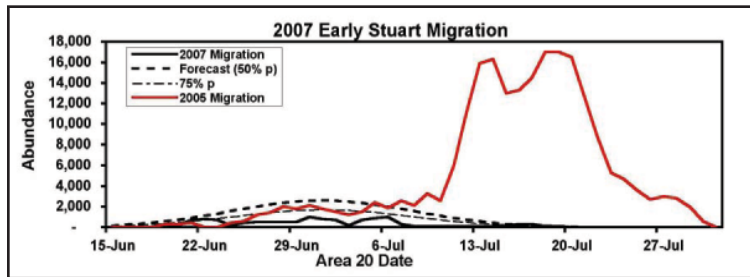
The Fraser Panel News Release No. 3 (July 27, 2007) indicates that the marine portion of the Early Stuart migration is complete. Coast-wide returns of 4 year old sockeye (4sub2) continue to be poor, and in general, test fisheries and in-river abundance assessments show sockeye returns significantly lower than the 50% P pre-season forecast.

The Fraser River Panel approved an in-season run size estimate of 13,000 for the Early Stuarts, far below the 50%P forecast of 45,000. Mission escapement through July 26th for Early Stuarts is 12,000. Early Summer migration past Mission up to July 26th is 7,000

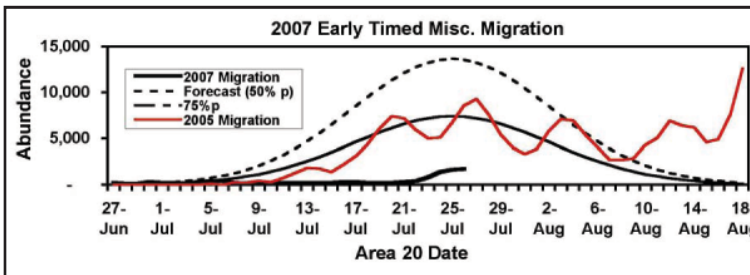
A weekly Aboriginal fisheries newsletter for  
fisheries representatives and their organizations



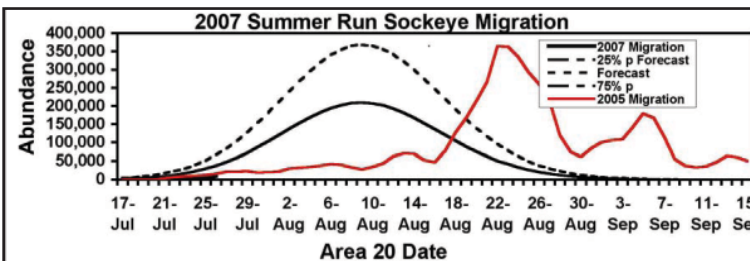
This graph shows the '07 proportion of 4 yr old sockeye compared to other years.



This graph shows the current information for the 2007 Early Stuart migration. There is currently no strong indication that the run is late, so it appears that the marine portion of the Early Stuart migration is complete. The 2005 migration is included to show the extremely late return that occurred that year.



This graph shows the current information for the 2007 Early Summer Misc migration (does not include Scotch/Seymour). The extremely late 2005 migration has been included for comparison. There are currently no indications that the 2007 Early timed miscellaneous migration is late.



This graph shows the current information for the 2007 Summer Run migration. Summer sockeye are showing in the marine test fisheries, but not in strength at this point. The 2005 migration has been included to show the late return from that year.

For more information contact Pete Nicklin @  
(250) 392-5888 or by email [indiseaent@shaw.ca](mailto:indiseaent@shaw.ca).

## GENERAL INFORMATION

With Chinook and sockeye approaching and in the Fraser, these links may be of interest to many:

**Albion Test Fishery – Chinook Gill Net:** [http://www.pac.dfo-mpo.gc.ca/fraserriver/commercial/commercialalbionchnk\\_e.htm](http://www.pac.dfo-mpo.gc.ca/fraserriver/commercial/commercialalbionchnk_e.htm)  
**Pacific Salmon Commission Website:** [www.psc.org](http://www.psc.org)

**LGL Fishwheel Catch Updates:** [http://www.psc.org/info\\_lglfish-wheelcatch.htm](http://www.psc.org/info_lglfish-wheelcatch.htm)

**Upper/Mid/Lower Fraser Catch and Openings:** <http://www.pac.dfo-mpo.gc.ca/fraserriver/firstnations.htm>

**Pacific Salmon Commission Test Fisheries:** [http://www.psc.org/info\\_testfishing\\_summaries.htm](http://www.psc.org/info_testfishing_summaries.htm)

**Pacific Salmon Commission News and Regulatory announcements:** [http://www.psc.org/news\\_frpnews.htm](http://www.psc.org/news_frpnews.htm)

**Fraser River Mission Escapement Reports:** [http://www.psc.org/info\\_inseasonfraserescapement.htm](http://www.psc.org/info_inseasonfraserescapement.htm)

**Fraser River Environmental Watch Program:** [http://www.sci.pac.dfo-mpo.gc.ca/fwh/index\\_e.htm](http://www.sci.pac.dfo-mpo.gc.ca/fwh/index_e.htm)

## Fraser Watershed Technical CONFERENCE CALLS

Fraser Panel Liaison Mike Staley will share up-to-date technical information from the Fraser Panel via teleconference on Thursday afternoons at 4:00pm.

**NEXT CALLS: AUGUST 2, 2007; AUGUST 9, 2007**

In order to participate you will need the following numbers:

Toll Free: 1-877-385-4099

Vancouver Local: 604-899-2339

Participant Access Code: 3196930#

**The Watershed Talk is available for download at [www.frafs.ca](http://www.frafs.ca). Next issue: August 3, 2007**