



WATERSHED TALK NEWSLETTER

Produced by the Fraser River Aboriginal Fisheries Secretariat

July 12, 2013

Volume X, Issue 3

Fraser Salmon In-season Update

By Pete Nicklin,
Fraser Fisheries Biologist,
Fraser River Aboriginal Fisheries Secretariat

General

The information in this update summarizes the information from the FRAFS July 11th Thursday in-season teleconference call, the Fraser River Panel information distribution July 12th, and Albion Chinook test fishery graphs from the DFO website.

The first 2013 FRAFS in-season teleconference (hosted by FRAFS Biologist Mike Staley) took place at Thursday July 4th, and these calls will continue weekly throughout the sockeye season, unless otherwise specified.

This Update covers:

- Fraser Chinook Albion Test Fishery;
- Water Conditions; and
- Fraser Sockeye.

Please continue to the next page for the complete report.



Purse Seine Training on Quesnel Lake

Purse seining is a selective method of fishing used in inland commercial fisheries. “We can sort out the by-catch and harvest just the targeted species,” said Gord Sterritt, Fisheries Resource Manager, Northern Shuswap Tribal Council.

This photo is from a training exercise for nine people from Northern Secwepemc and Okanagan (Syilx) communities. “Everyone took a turn as captain and crew,” said Gord.

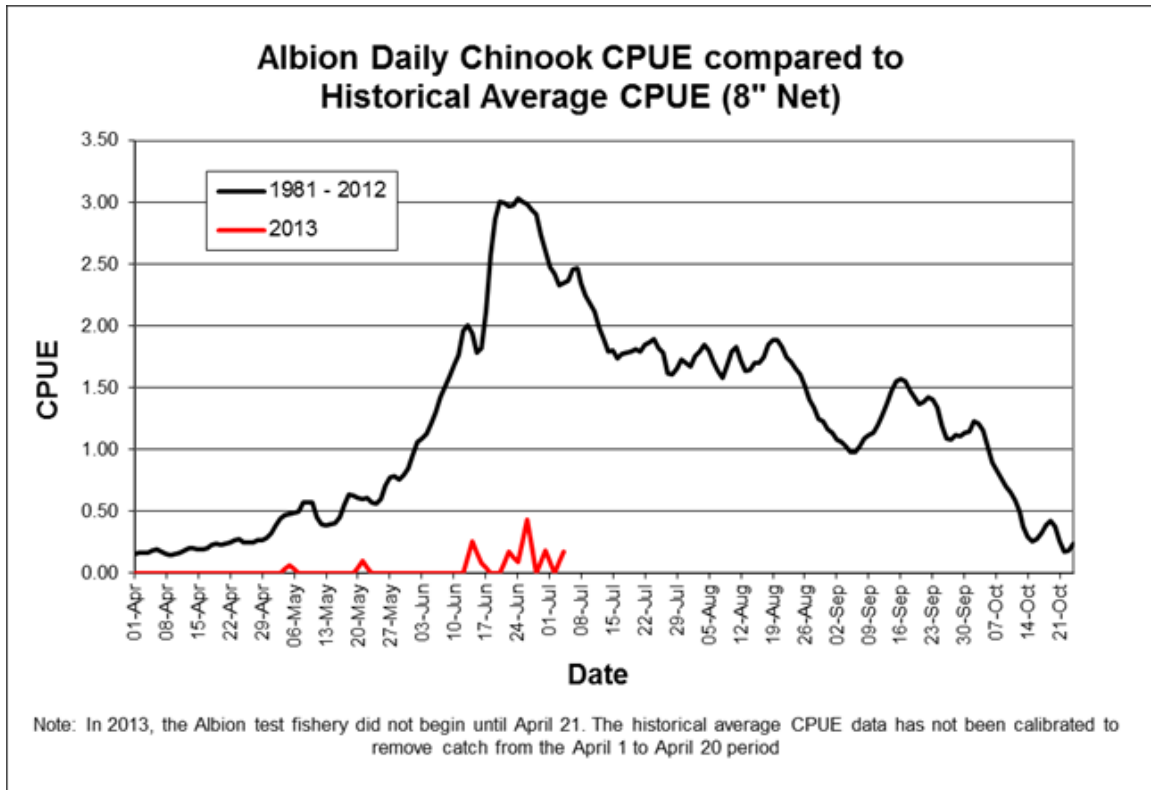
The boat is a modified herring punt. With training and boat, Northern Secwepemc are in “a position to mobilize” when there is an opening for a commercial fishery in their area, said Gord.

FRASER RIVER ABORIGINAL FISHERIES SECRETARIAT

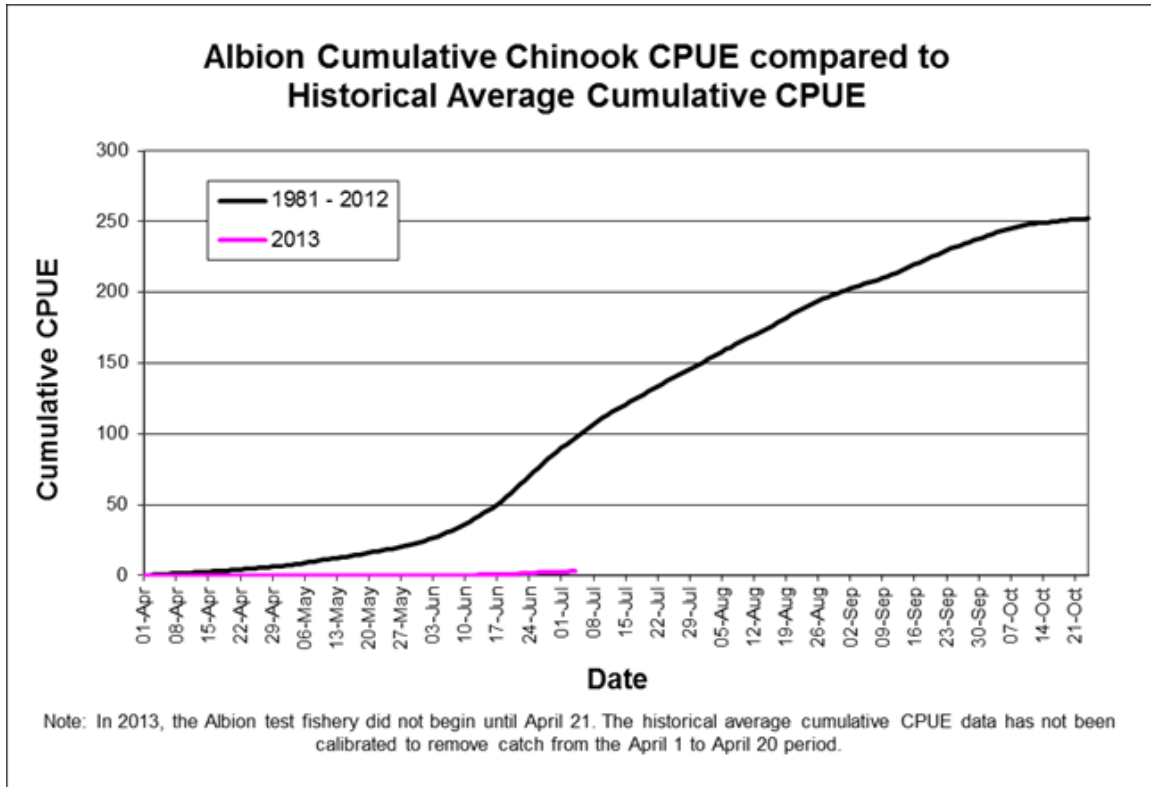
c/o Nicola Tribal Association • PO Box 188 • Merritt, BC • V1K 1B8
Tel: 250-378-4235 • Fax: 250-378-9119 | frafs15@gmail.ca • www.frafs.ca

Fraser Chinook Albion Test Fishery

(Graphs from DFO website: Albion Chinook Test Fishery)



Fraser Chinook Albion Test Fishery



Water Conditions

Fraser River discharge and temperature information is updated and distributed by the Pacific Salmon Commission. The graphs in this section are taken directly from that update.

Current Fraser River temperatures at Hope are above average for this time of year. Water discharge in the Fraser is below average for this time of year, and forecast to track close to the average for the next several days.

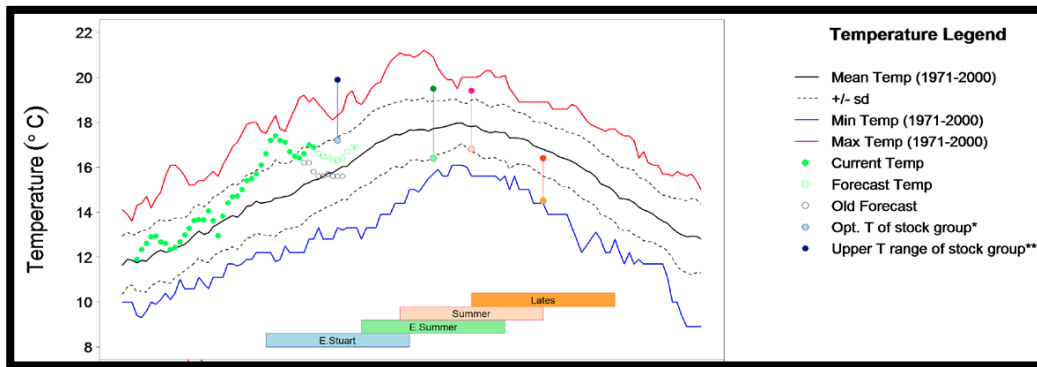


Figure 1: This graph shows the Fraser River temperatures at Qualark Creek (Lower Fraser). The line with the solid green circles shows the 2013 observed temperatures. The unfilled green circle portion of the line shows the forecast temperatures. The black unfilled circles are the forecast values from earlier in the week. The current temperature is approximately 16.9 degrees Celsius and forecast to decrease to 16.4 degrees Celsius by July 17th. The current temperature is above average for this time of year (15.4 degrees Celsius – solid black line is the average (1971-2000)). The vertical lines connected by circles show the Optimal and Upper temperature range of the sockeye aggregates.

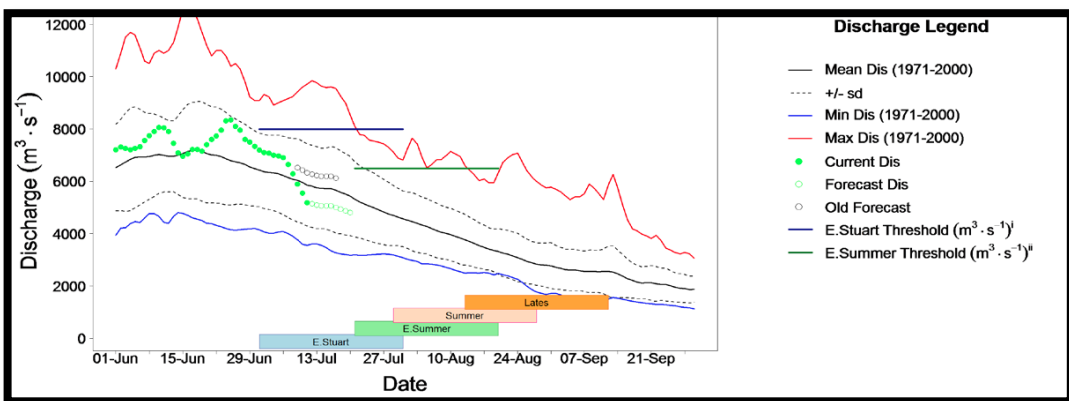


Figure 2: This graph shows the 2013 Fraser River discharge at Hope. The line with the solid green circles is the 2013 observed discharge values, and the forecast discharge shows as unfilled green circles. The black unfilled circles are the forecast discharge values for earlier in the week. Fraser River discharge is below average for this time of year. The July 11th discharge was 5183 cms (approximately 12% lower than average for the date), and forecast to decrease to approximately 5000 cms by July 17th.

Fraser Sockeye

Fraser sockeye are in marine approach areas and migrating in the Fraser River.

Early Stuarts, Early Summers, and Summers have showed in test fisheries conducted to date. The Area 20 Gillnet test fishery has been operating since June 24th.

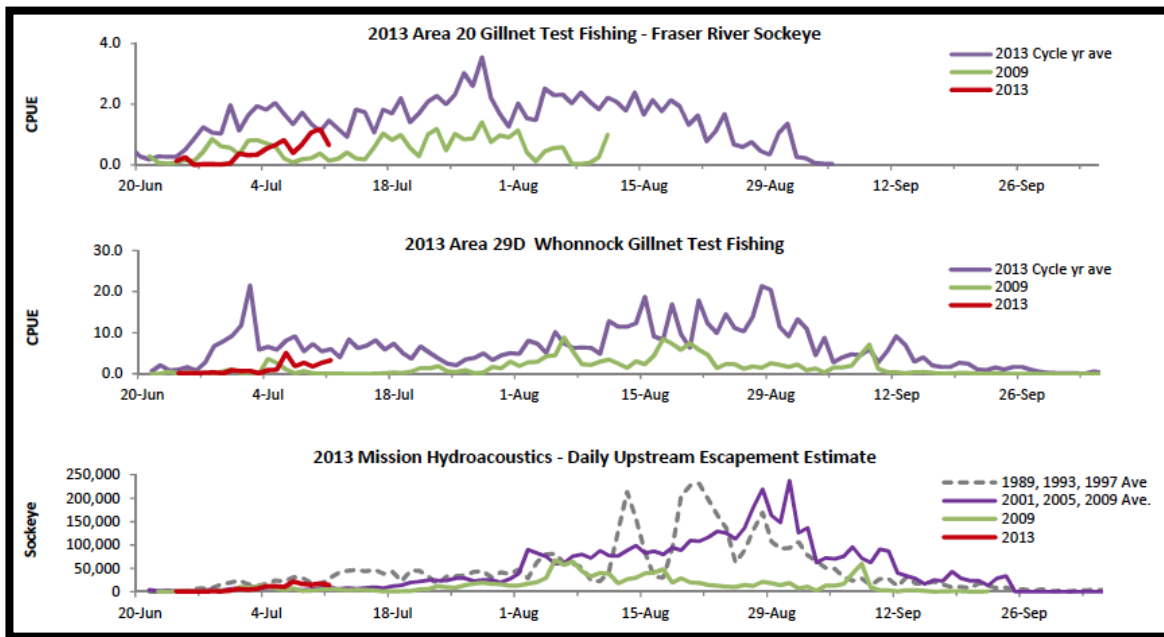
An estimated 120,000 Early Stuarts, 28,300 Early Summers, and 300 Summers have passed the Mission hydroacoustics station. Early Stuart Area 20 timing is estimated at July 4th, one day earlier than expected pre-season.

The current in-season run size estimate (July 12th) for Early Stuarts is 217,000 (July 4th Area 20 timing), which is greater than the P50 pre-season forecast of 211,000. The proportional Management Adjustment (pMA) for Early Stuarts based on that timing is 1.27, or approximately 137,000 fish. This means that in order to meet the spawning escapement target of 108,000 fish on the grounds, a total of 245,000 fish have to be sent up the river. At this in-season run size estimate and Management Adjustment, there is no Total Allowable Catch (TAC) for the Early Stuarts.

The next scheduled Fraser River Panel meeting is Tuesday July 16th at 11AM.

Fraser Sockeye Test Fishery Summary (Provided by Pacific Salmon Commission)

Figure 3: Pacific Salmon Commission 2013 test fisheries summary (to July 11th).



Fraser Sockeye Area 20 Sockeye Passage (Graphs provided by PSC)

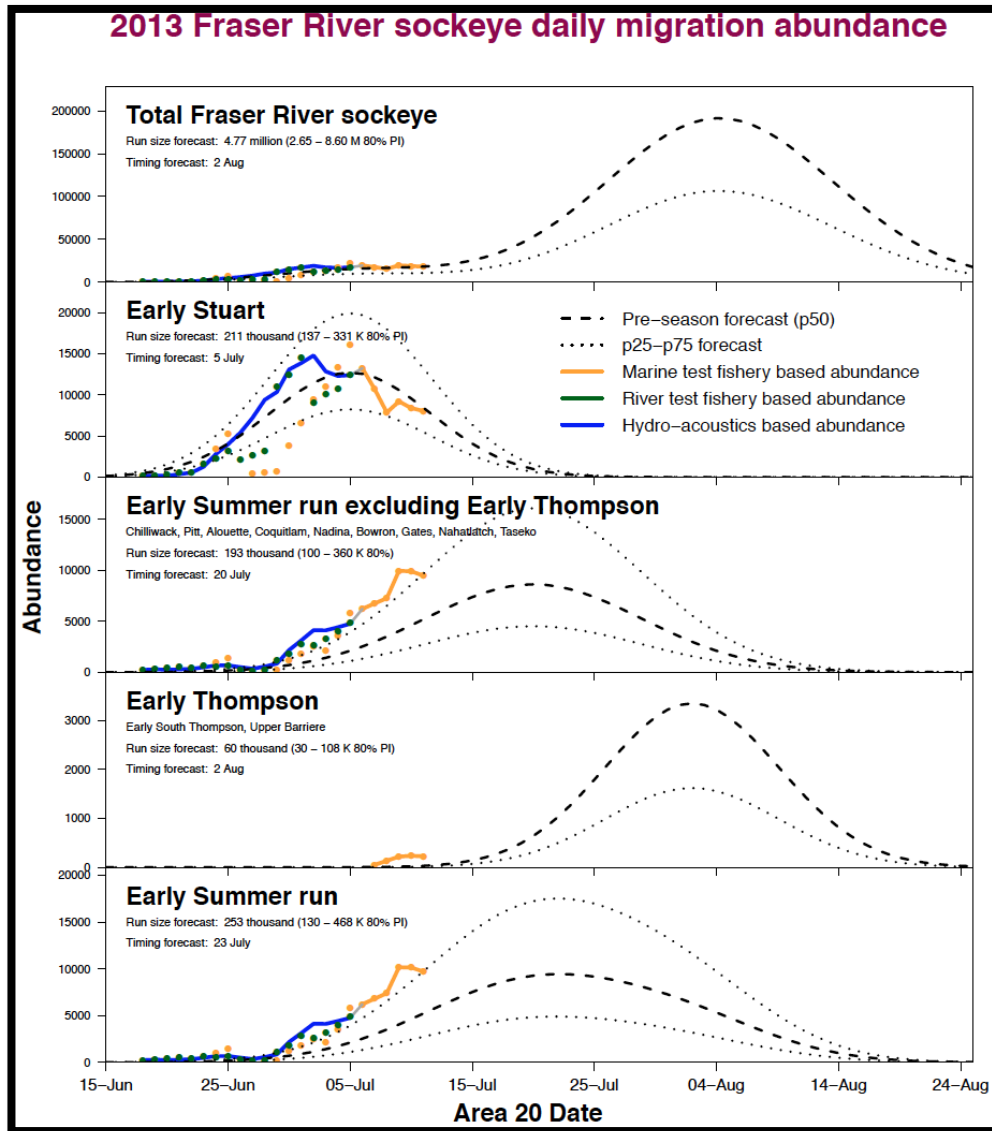


Figure 4: These graphs show the current (July 11th) information for the 2013 Fraser, Early Stuart and Early Summer sockeye migration

For more information contact Pete Nicklin by email: pnicklin@telus.net