



CONSULTATION ON THE POTENTIAL SPECIES AT RISK ACT EMERGENCY LISTING OF THOMPSON & CHILCOTIN STEELHEAD

Kamloops Meeting for First Nations and Indigenous Groups
October 30, 2018



Presented by:
DFO Species at Risk Program
sara.xpac@dfo-mpo.gc.ca

Independent Neutral Facilitation

- The role of the facilitator is to assist in the planning of the event
- To have years of experience with AFS programs in order to assist in the discussions and help conversations remain focused
- Manage the meeting such that it remains a respectful and safe space where the voices of First Nation Leaders and government officials can be heard concerning the topics on the agenda
- To maintain the discourse within the perimeters laid out in the agenda
- To intervene when necessary so as not to allow the meeting to go beyond the scope of the agenda

Common Engagement Practices

- Start on time and leave on time
- Observe time limits and topics on the agenda
- Listen generously, one conversation at a time
- Challenge ideas not people
- Don't let perfection get in the way of progress
- Stay positive and open, solution oriented
- Turn phones off during sessions plenty of time during breaks to plug in

Outline

- **Thompson and Chilcotin Steelhead**
- ***Species at Risk Act (SARA)* & Emergency Listing**
- **Management Scenarios**
 - Measures: General, habitat, science and conservation
 - Provincial fishery measures
 - Federal fishery measures
- **Cultural Significance**
- **Cost-Benefit Analysis**
- **Consultations & Next steps**

Consultations

- Consultations open until **December 2nd**:
 - Submit feedback by email, mail, or online:
 - www.dfo-mpo.gc.ca/species-especies/consultations/steelheadtrout-saumonarcenciel/index-eng.html
 - sara.xpac@dfo-mpo.gc.ca
- Feedback will be included in regional listing information

Resource Available Online

Online Listing Surveys

- Navigate to consultation website:

www.dfo-mpo.gc.ca/species-especes/consultations/steelheadtrout-saumonarcenciel/index-eng.html

A screenshot of the Fisheries and Oceans Canada website. The page title is "Thompson and Chilcotin Steelhead Trout: consultation on the potential emergency listing under the Species at Risk Act". The page content includes a paragraph about the COSEWIC assessment, a paragraph about the Minister's role, and a section titled "How to provide input on the Thompson and Chilcotin Steelhead emergency listing process" with four bullet points linking to specific surveys.

Fisheries and Oceans Canada

Canada

On the water ▾ Fisheries ▾ Science and research ▾ Ecosystems ▾ Species ▾ Aquaculture ▾ Regions ▾

Home → Aquatic species → Consultations

Thompson and Chilcotin Steelhead Trout: consultation on the potential emergency listing under the Species at Risk Act

The Committee on the Status of Endangered Wildlife in Canada (COSEWIC) has performed an emergency assessment of both the Thompson and Chilcotin Steelhead Trout populations (or Designatable Units [DUs]) and found them to be endangered.

Following an emergency assessment, the Minister of Environment and Climate Change Canada (ECCC) must form an opinion on whether imminent threat to survival exists. If the Minister is of the opinion there is an imminent threat to one or both populations of Steelhead Trout, she must recommend to Governor in Council (GiC) that the population(s) be listed on an emergency basis. Following such a recommendation, GiC would make a listing decision based on information provided by the Minister, and may consider additional information, such as socio-economic impacts and the results of consultations with Indigenous Peoples and stakeholders.

To inform the GiC's decision, Fisheries and Oceans Canada (DFO) is conducting consultations on the potential impacts of listing Thompson and Chilcotin Steelhead, and collecting any additional information submitted for GiC to consider.

How to provide input on the Thompson and Chilcotin Steelhead emergency listing process

- [Species at Risk Public Registry](#)
- [Survey on the emergency listing of the Steelhead Trout \(Thompson and Chilcotin populations\) under the Species at Risk Act](#)
- [Survey on the emergency listing of the Steelhead Trout \(Chilcotin population\) under the Species at Risk Act](#)
- [Survey on the emergency listing of the Steelhead Trout \(Thompson population\) under the Species at Risk Act](#)

Surveys available under first sub-heading



Resource Available Online

Recovery Potential Assessment

- Navigate to consultation website:

www.dfo-mpo.gc.ca/species-especes/consultations/steelheadtrout-saumonarcenciel/index-eng.html



- Resource Material located halfway down the main page:

Resource Material

- [HTML version of "Management Scenarios: Thompson and Chilcotin Steelhead"](#)
- [📄 "Management Scenarios: Thompson and Chilcotin Steelhead" \(2018-10-01\) \(PDF format, 209 KB\)](#)
- [Chilcotin Steelhead Trout Profile](#)
- [Thompson Steelhead Trout Profile](#)
- [COSEWIC technical summaries and supporting information for emergency assessments](#)
- [Recovery Potential Assessment \(pending\)](#)

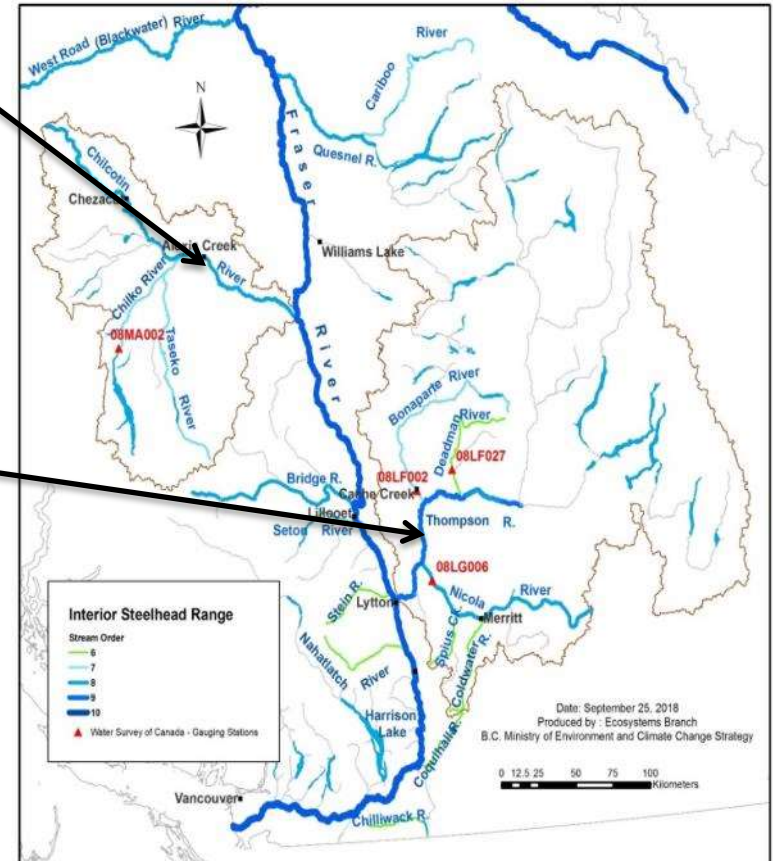
Thompson & Chilcotin Steelhead Trout

- **Chilcotin population:**

- Inhabits Chilcotin River and spawns in the Chilko, Taseko, and Little Chilcotin Rivers

- **Thompson population:**

- Inhabits Thompson River, and spawns in the Nicola, Deadman, Bonaparte and Coldwater Rivers, and Spius Creek

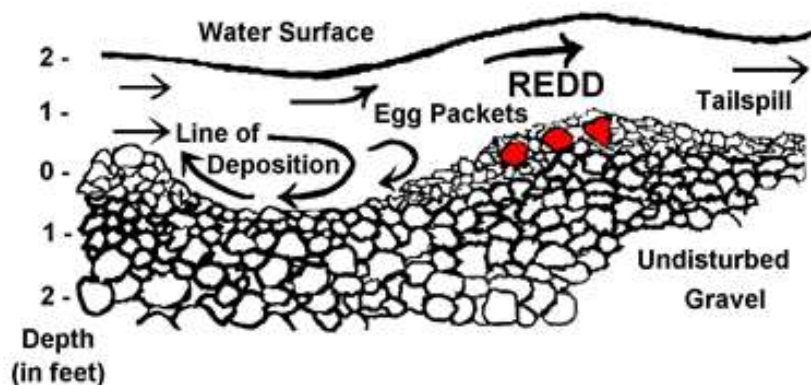


T&C Steelhead – Life History



- Juveniles spend 2-4 years in freshwater
- After entering ocean, smolts spend 2-3 years maturing
- Maximum age at return to freshwater is 6 to 7 years
- Mature adults overwinter in freshwater and spawn in spring
- < 3% of adults are repeat spawners (kelts)

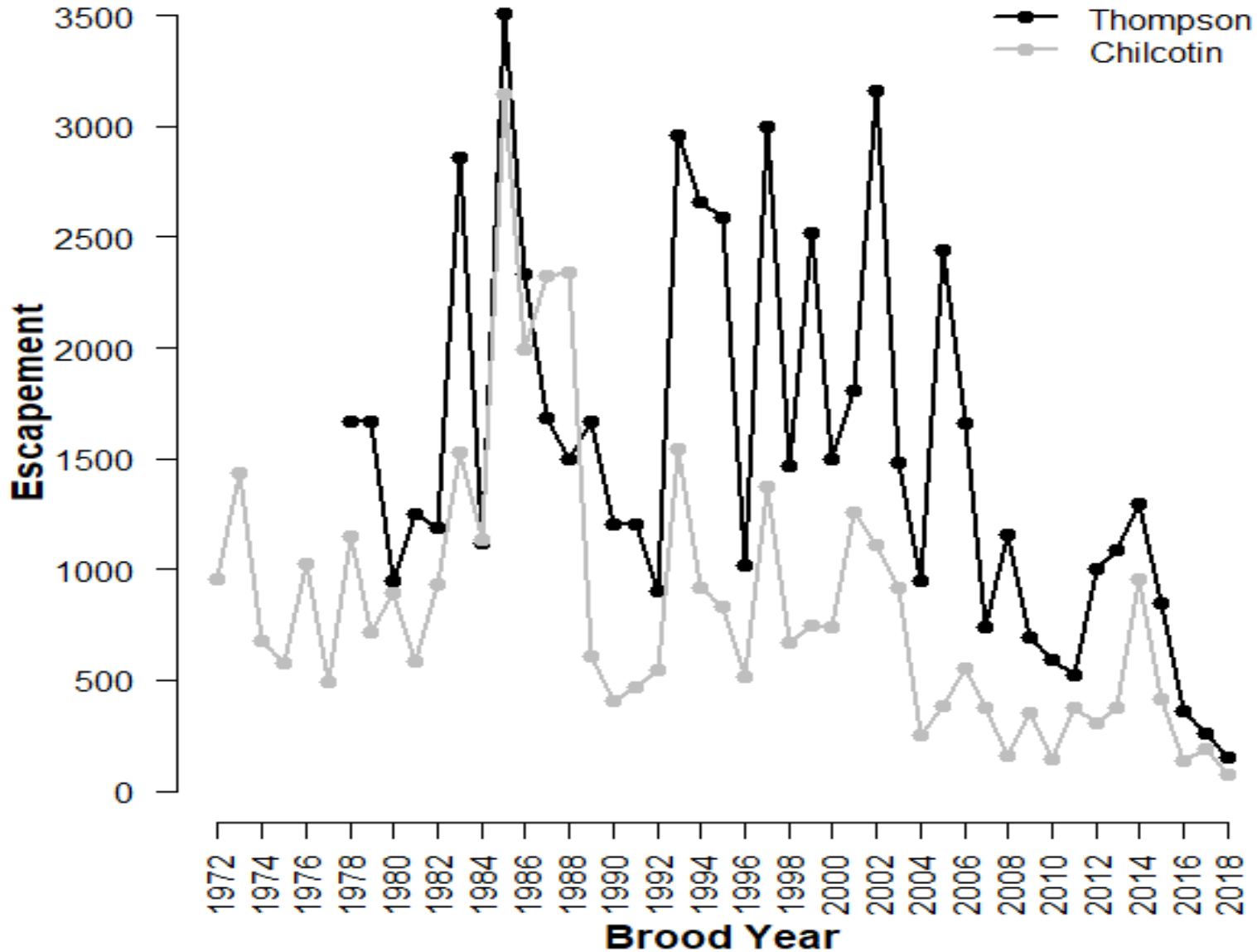
T&C Steelhead – Life History



- Eggs deposited in gravel redds in fast-flowing riffles
 - Redds would be considered a “residence” of Steelhead

“a dwelling-place...that is occupied...during all or part of their life cycles, including breeding, rearing, staging, wintering, feeding or hibernating”

T&C Steelhead – Status



T&C Steelhead - Threats & Limiting Factors

Threats

- Bycatch in Commercial Fisheries
- Recreational Sports Fisheries (Directed & Bycatch)
- Food, Social, Ceremonial Fisheries (Directed & Bycatch)
- Science Activities
- Pollution
- Physical Habitat Degradation

Limiting Factors

- Altered Ocean Conditions
- Altered Freshwater Conditions
- Predation
- Parasites or pathogens



QUESTIONS?

COSEWIC Assessment

- **T&C Steelhead emergency assessed as Endangered in January 2018**
- **“Committee on the Status of Endangered Wildlife in Canada”**
 - Independent advisory panel to the Minister of Environment and Climate Change Canada (MECC)
 - Wildlife biology experts: academia, government, non-governmental organizations and private sector
 - Meets twice a year to assess the status of wildlife



What is the *Species at Risk Act* (SARA)?

- **Federal legislation; purpose is to:**
 - Prevent wildlife from becoming extinct in Canada
 - Secure the recovery of Extirpated, Endangered, and Threatened species
 - Manage species of Special Concern to prevent from becoming further at risk
- **Applies to:**
 - All listed wildlife species at risk in Canada
 - Their residence and habitat
 - All federal lands and waters in Canada
- **Responsible Departments and Agencies:**
 - Environment and Climate Change Canada, Fisheries and Oceans Canada, Parks Canada

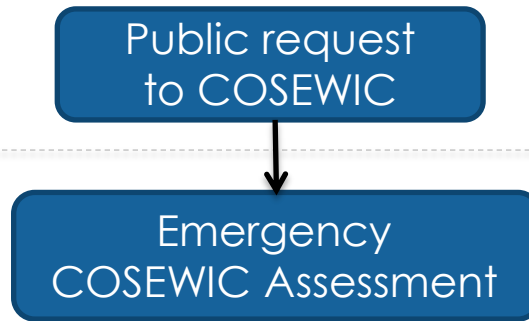
What does Endangered SARA listing mean?

- Automatic general prohibitions
 - killing, harming, harassing, capturing, taking, possessing, collecting, buying, selling, trading; damaging/destroying residence
- Permit required if contravening prohibitions
- Recovery Strategy required within 1 year, followed by Action Plan
- Critical habitat identification and protection
- Additional funding for recovery activities

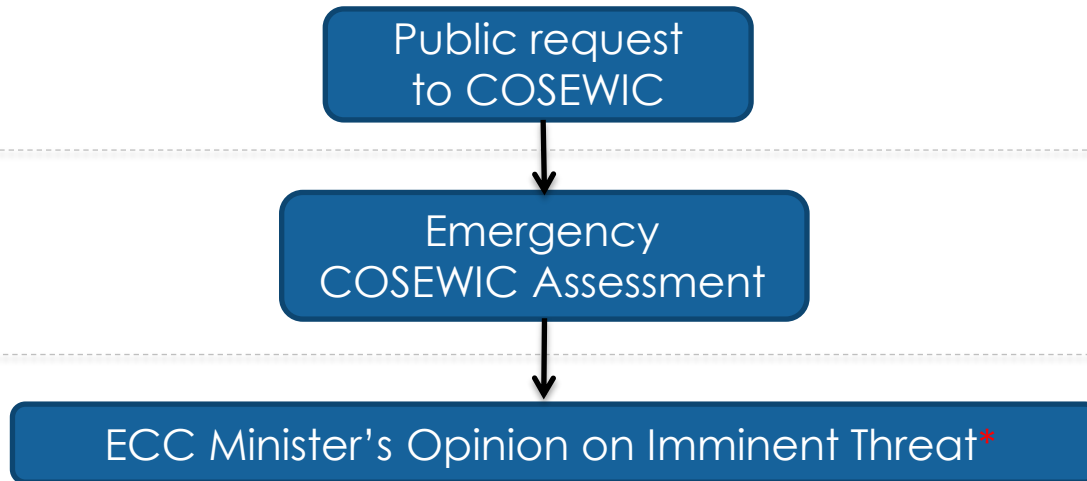
Emergency SARA Listing Process

Public request
to COSEWIC

Emergency SARA Listing Process

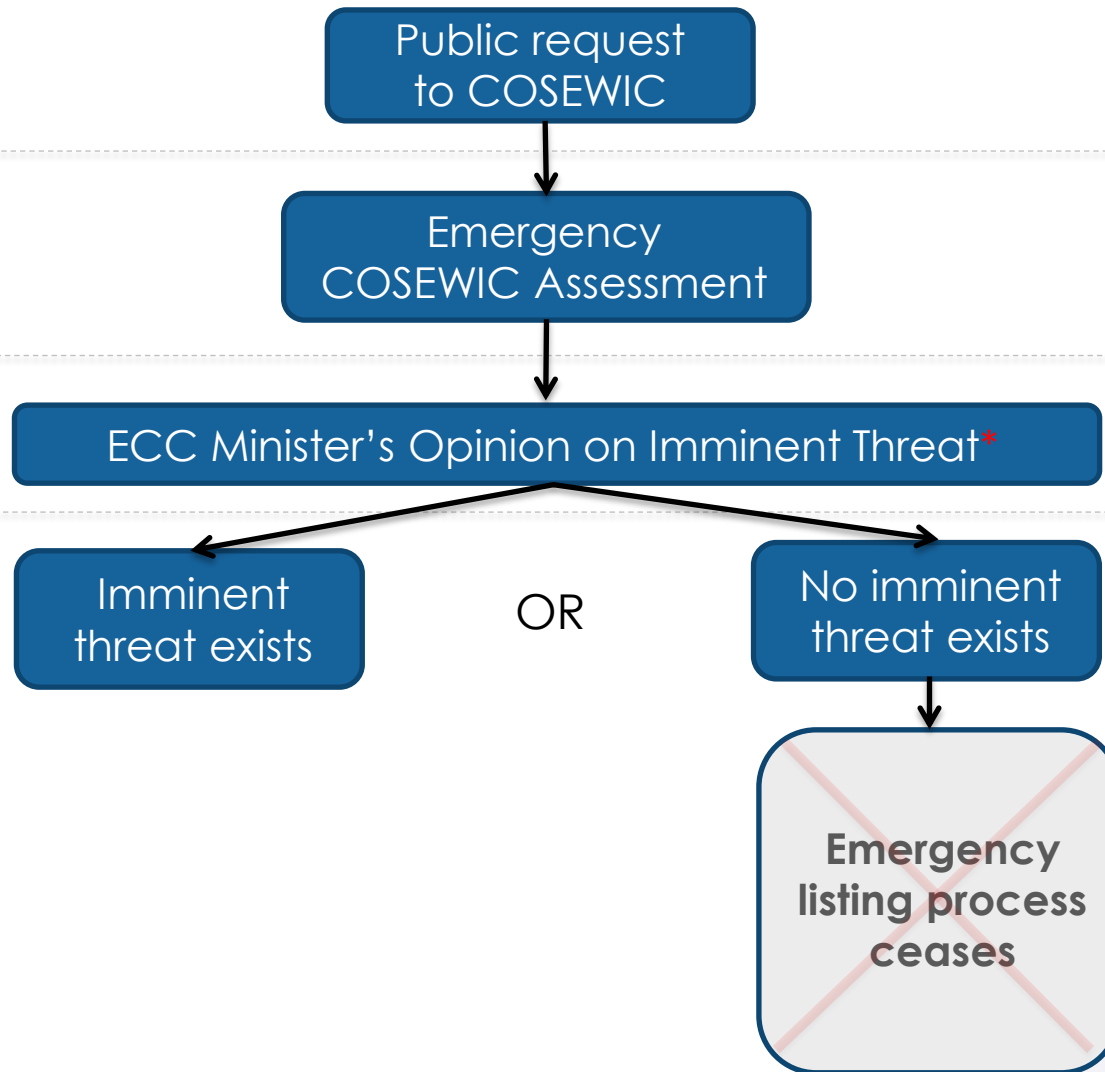


Emergency SARA Listing Process



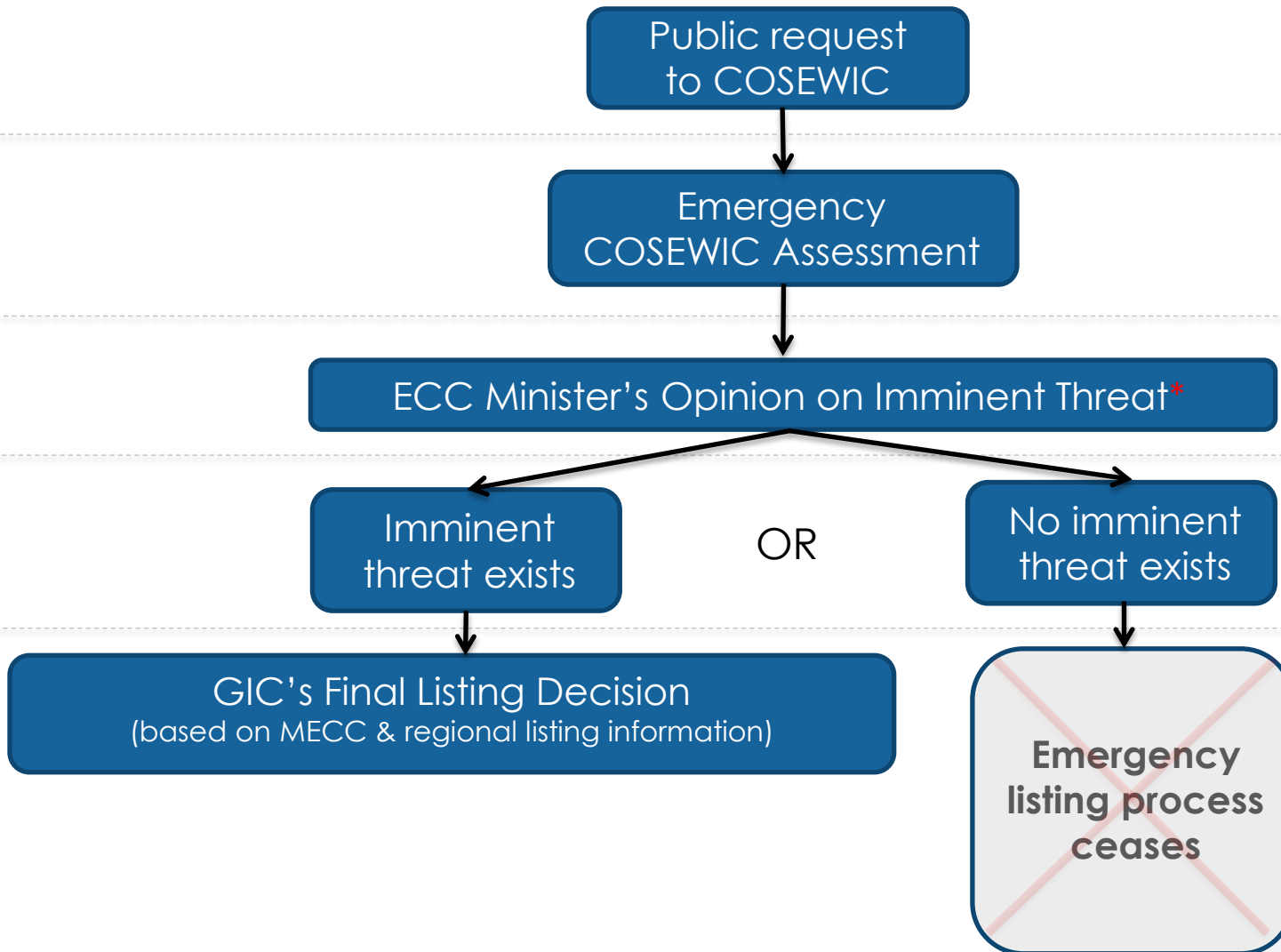
**Currently pending for Thompson and Chilcotin Steelhead*

Emergency SARA Listing Process



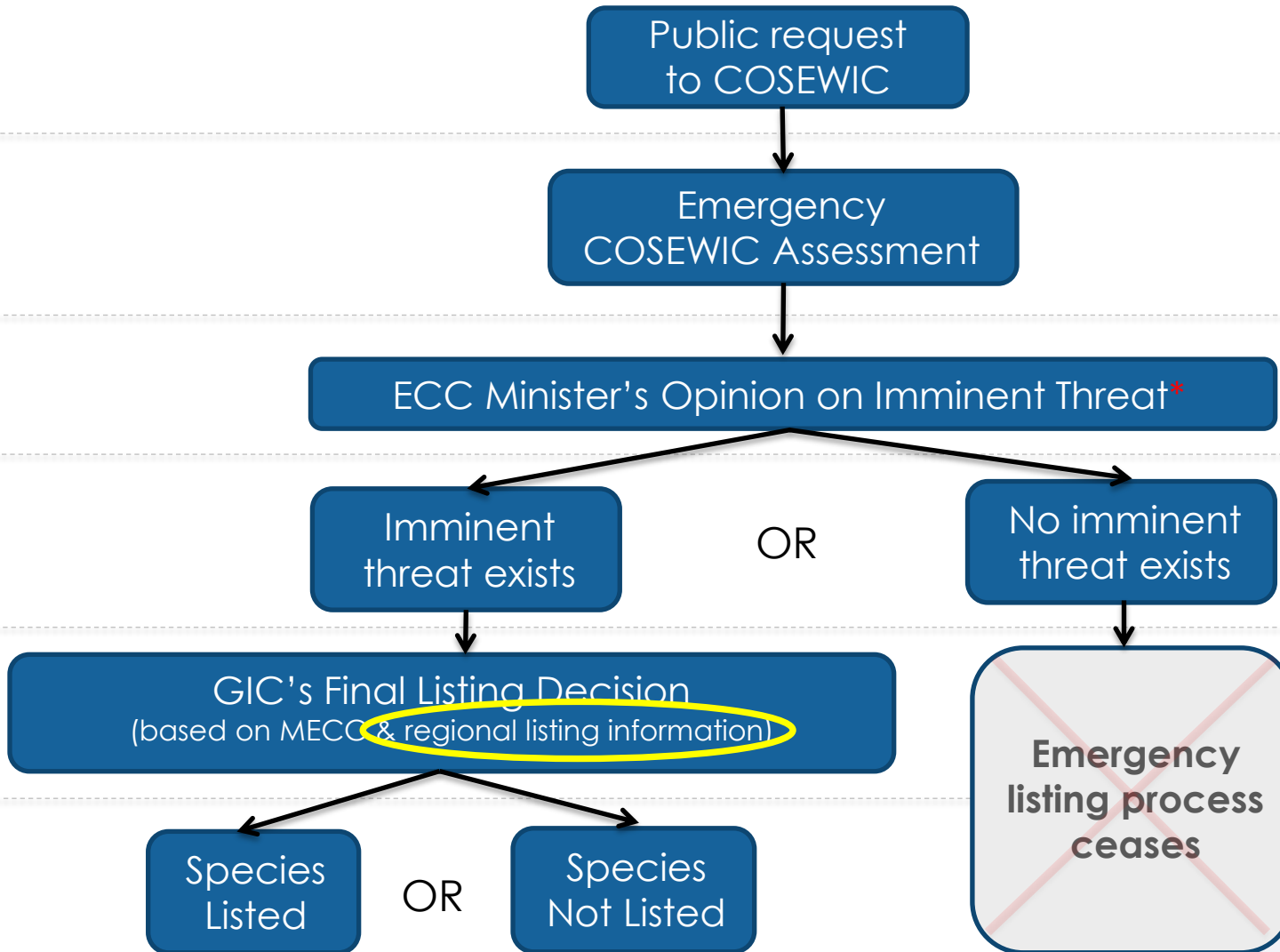
*Currently pending for Thompson and Chilcotin Steelhead

Emergency SARA Listing Process



*Currently pending for Thompson and Chilcotin Steelhead

Emergency SARA Listing Process



*Currently pending for Thompson and Chilcotin Steelhead

Regional Listing Information

a) Recovery Potential Assessment (In progress)

- Peer-reviewed DFO Science process covering: biology, distribution, life history, threats and limiting factors, allowable harm, recovery targets etc.

b) Management Scenarios (Complete)

- Outlines potential measures that may be taken if a species is, or is not, listed

c) Cultural Significance (In progress)

- Indigenous cultural significance of Steelhead, and FSC fisheries that encounter Steelhead (to supplement CBA below)

d) Cost-Benefit Analysis (CBA; In progress)

- Estimates costs and benefits of listing (including species protection, recovery measures, impacts of forgone harvest for consumption)

e) Consultation (In progress)

- Input from First Nations, stakeholders, ENGOs, and the public to inform listing decision

QUESTIONS?

Regional Listing Information

Recovery Potential Assessment (In progress)

- Peer-reviewed DFO Science process covering: biology, distribution, life history, threats and limiting factors, allowable harm, recovery targets etc.

Management Scenarios (Complete)

- Outlines potential measures that may be taken if a species is, or is not, listed

Cultural Significance (In progress)

- Indigenous cultural significance of Steelhead, and FSC fisheries that encounter Steelhead (to supplement CBA below)

Cost Benefit Analysis (In progress)

- Estimates costs and benefits of listing (including species protection, recovery measures, impacts of forgone harvest for consumption)

Consultation (In progress)

- Input from First Nations, stakeholders, ENGO's and the public to inform listing decision

Resource Available Online

Management Scenarios

- Navigate to consultation website:

www.dfo-mpo.gc.ca/species-especes/consultations/steelheadtrout-saumonarcenciel/index-eng.html



- “Resource Material” located halfway down the main page:

Resource Material

- [HTML version of “Management Scenarios: Thompson and Chilcotin Steelhead”](#)
- [📄 “Management Scenarios: Thompson and Chilcotin Steelhead” \(2018-10-01\) \(PDF format, 209 KB\)](#)
- [Chilcotin Steelhead Trout Profile](#)
- [Thompson Steelhead Trout Profile](#)
- [COSEWIC Technical summaries and supporting information for emergency assessments](#)
- Recovery Potential Assessment (pending)

Management Scenarios

Context

- Alternative measures to mitigate human threats in the event of listing, or not
- Three types of “Scenarios”:
 - **Baseline***: measures already in place
 - **Do Not List****: measures to be implemented mechanisms other than SARA
 - **List**: measures to be implemented as a result of Endangered listing and general prohibitions

Management Scenarios

Activities

- Management Scenarios organized by various threat categories
 - General Measures
 - Habitat Degradation
 - Science & Conservation Activities
 - Fisheries

Management Scenarios

Measures: General (Rebuilding Plans & SARA Requirements)

- **Baseline:**
 - No rebuilding plans, and SARA does not apply
- **Do Not List:**
 - (Under current *Fisheries Act*) Rebuilding Plans could potentially be applied
- **List:**
 - General Prohibitions (killing, harming, harassing, damaging/destroying residence etc.)
 - Recovery Strategy and critical habitat identification, followed by Action Plan; progress reporting
 - Additional funding available

Management Scenarios

Measures: Habitat Degradation

- **Baseline**

- **DFO:**

- *Fisheries Act* prohibits serious harm to fish
- Project review and advice, authorizations, occurrence mgmt.
- Supports restoration / enhancement and regulatory partnerships

- **Province of BC:**

- develops collaborative BMPs, regulates:
 - forest and range practices (BC Crown land)
 - applications for new major mines and major expansion projects
 - changes in / about a stream
 - agricultural waste mgmt.
 - water licences
 - release of deleterious substances

- **Multiple parties:**

- working on new operating rule curve for Nicola Lake Dam

Management Scenarios

Measures: Habitat Degradation

- **Do Not List:**

- Same as Baseline

- **List:**

- Habitat protection measures and mapping
- Prohibitions against killing, harming, harassing, damaging/destroying residence, etc.
- Works/undertakings affecting T&C Steelhead submitted for review
 - Subject to meeting SARA S. 73 pre-conditions
 - No lethal effects

Management Scenarios

Measures: Habitat Degradation

- **List (cont'd):**

- SARA permitting requirements

- Must be at least one of the following purposes:
 - Scientific research
 - Activity benefiting the species
 - Activity incidentally affecting the species
- AND, must meet ALL of these pre-conditions:
 - reasonable alternatives considered
 - feasible measures taken to minimize impacts
 - activity will not jeopardize survival or recovery

Management Scenarios

Measures: Science & Conservation

- **Baseline**

- **DFO:**

- *Fisheries Act* Licences
- Resource Restoration Unit
- Stock assessment research

- **Province of BC:**

- Fish collection permits
- Stock assessment research

Management Scenarios

Measures: Science & Conservation

- **Do Not List:**

- Same as Baseline

- **List:**

- Prohibitions against killing, harming, harassing etc.

- If pre-conditions satisfied, may permit research or activities benefiting the species

Management Scenarios

Measures: Science & Conservation

- **List (cont'd):**

- SARA permitting requirements

- Must be at least one of the following purposes:
 - Scientific research
 - Activity benefiting the species
 - Activity incidentally affecting the species
- AND, must meet ALL of these pre-conditions:
 - reasonable alternatives considered
 - feasible measures taken to minimize impacts
 - activity will not jeopardize survival or recovery

QUESTIONS?

Management Scenarios

Measures: Provincially-managed recreational fisheries

- **Baseline**

- Various restrictions are in place throughout Steelhead waters to protect them through all stages of lifecycle
- Known Steelhead holding or spawning areas closed during inhabited periods
- Wild Trout, Char, and Steelhead is catch and release in Steelhead systems at times when adult Steelhead are present, and year round in Lower Fraser
- No retention of trout under 30-35 cm year round in Steelhead systems to protect juvenile Steelhead

Management Scenarios

Measures: Provincially-managed recreational fisheries

- **Do Not List:**

- Variation order to extend closed period in Thompson River

- **List:**

- Thompson and Chilcotin Steelhead catch prohibited
- Fraser River mainstem closures during Steelhead migration

QUESTIONS?

Management Scenarios

Measures: Federally-managed recreational salmon fisheries

- **Baseline**

- Steelhead non-retention, single barbless hooks
- Freshwater areas generally closed to salmon fishing except when salmon abundance allows:
 - Chilcotin R. – potential Chinook opening
 - Thompson R. – potential Chinook & Sockeye openings
 - Bonaparte, Coldwater, Nicola, Deadman R.'s closed
 - Fraser R. – potential openings for all salmon species
 - Closed times for interior Fraser Coho

Management Scenarios

Measures: Federally-managed recreational salmon fisheries

- **Do Not List:**

- Chilcotin Watershed & Fraser River Mainstem: rolling 27-day window closure (refer to App. B)

- **List:**

- T&C Steelhead catch prohibited
- Specific areas in the Chilcotin, Thompson, Fraser watersheds, and marine waters: 60-day rolling window closure* (refer to Appendix A)

Management Scenarios

Measures: Federally-managed commercial salmon fisheries

- **Baseline:**

- Steelhead non-retention, with various restrictions/required measures:

- brailing and sorting
- revival boxes / gear restrictions
- localized area closures
- delayed/limited openings
- daylight only, short soak times
- ITQ and/or ITE management
- reduced area and effort limitation
- limited observer coverage



Management Scenarios

Measures: Federally-managed commercial salmon fisheries

- **Do Not List:**

- Lower Fraser River:

- Gillnet and Seine (including Economic Opportunity): Rolling 27-day window closure (refer to Appendix B)

- Johnstone Strait:

- Gillnet: Rolling 27-day window closure (refer to App. B)
- Seine: enhanced observer coverage

- Nitinat Area:

- Gillnet: delayed until October 1
- Seine: delayed until October 15

Management Scenarios

Measures: Federally-managed commercial salmon fisheries

- **List:**

- Thompson and Chilcotin Steelhead catch prohibited
- 60-day rolling window closure (refer to Appendix A) in specific areas of:
 - Fraser watershed, Strait of Georgia, Juan de Fuca Strait, Johnstone Strait, and WCVI (including Nitinat)

Management Scenarios

Measures: Food, Social, Ceremonial (FSC) Fisheries

- **Baseline:**

- Targeted and intercepted in non-salmon FSC fisheries
- Intercepted in FSC salmon fisheries, which have various restrictions/required measures depending on area:

- Selective gear only
- Steelhead non-retention
- Revival boxes
- Brailing and sorting



Management Scenarios

Measures: Food, Social, Ceremonial (FSC) Fisheries

- **Do Not List:**

- Targeted Steelhead Fishery:

- Closure by Tsilhqot'in National Government

- Salmon Fishery:

- Fraser River (Downstream of Sawmill Creek): 27-day rolling window closure (refer to Appendix B); limited gillnet openings and beach seines permitted in closure
- Marine Areas: Mandatory release of Steelhead

Management Scenarios

Measures: Food, Social, Ceremonial (FSC) Fisheries

- **List:**

- Targeted Steelhead Fishery:

- Thompson and Chilcotin Steelhead catch prohibited

- Salmon Fishery:

- Thompson and Chilcotin Steelhead catch prohibited
- Specific areas (Chilcotin, Thompson, Fraser, marine): 60-day rolling window closure* (refer to Appendix A)
- Adaptive management approach in Fraser River mainstem for post-spawn adults (kelts) in spring

QUESTIONS?

Regional Listing Information

Recovery Potential Assessment (In progress)

- Peer-reviewed DFO Science process covering: biology, distribution, life history, threats and limiting factors, allowable harm, recovery targets etc.

Management Scenarios (Complete)

- Outlines potential measures that may be taken if a species is, or is not, listed

Cultural Significance (In progress)

- Indigenous cultural significance of Steelhead, and FSC fisheries that encounter Steelhead (to supplement CBA below)

Cost Benefit Analysis (In progress)

- Estimates costs and benefits of listing (including species protection, recovery measures, impacts of forgone harvest for consumption)

Consultation (In progress)

- Input from First Nations, stakeholders, ENGO's and the public to inform listing decision

Resource Available Online

Cultural Significance Website

- Navigate to consultation website:

www.dfo-mpo.gc.ca/species-especes/consultations/steelheadtrout-saumonarcenciel/index-eng.html



- “Cultural Significance” located directly beneath “Resource Material” :

Cultural Significance

We are collecting information regarding the cultural significance of Thompson and Chilcotin Steelhead to Indigenous peoples.

- [Cultural significance and the emergency listing process for Thompson and Chilcotin steelhead](#)

Indigenous Cultural Significance

- DFO committed to renewed, nation-to-nation relationship
- It is important to DFO that the cultural significance of Steelhead, and FSC fisheries that encounter Steelhead, are reflected
- Standardized Cost-Benefit Analyses may not be appropriate tool
- DFO is collecting Indigenous cultural significance information here:

<http://www.dfo-mpo.gc.ca/species-especes/consultations/sara-lep/cultural-significance/index-eng.html>

Indigenous Cultural Significance

Example: Glass Sponge Reefs MPA

Gitxaala First Nation representatives maintain the following:

“Specifically, the northern and central reef areas have an important place in the history of the Gitxaala people. Through discussions with Gitxaala Elders it is also evident that these areas have great significance to the spiritual connection that the Gitxaala people have with their territory. The stories and history of these special places have been passed down from generation to generation and continue to be an integral part of Gitxaala’s culture. Protection of these reefs would assist Gitxaala with the protection and perseverance of its status of a unique people with a unique culture.”

Regional Listing Information

Recovery Potential Assessment (In progress)

- Peer-reviewed DFO Science process covering: biology, distribution, life history, threats and limiting factors, allowable harm, recovery targets etc.

Management Scenarios (Complete)

- Outlines potential measures that may be taken if a species is, or is not, listed

Cultural Significance (In progress)

- Indigenous cultural significance of Steelhead, and FSC fisheries that encounter Steelhead (to supplement CBA below)

Cost Benefit Analysis (In progress)

- Estimates costs and benefits of listing (including species protection, recovery measures, impacts of forgone harvest for consumption)

Consultation (In progress)

- Input from First Nations, stakeholders and the public to inform listing decision

Resource Available Online

Cost-Benefit Analysis Workbooks

- Navigate to consultation website:

www.dfo-mpo.gc.ca/species-especes/consultations/steelheadtrout-saumonarcenciel/index-eng.html




- “Cost-Benefit Analysis” at bottom of page:

Cost – Benefit Analysis

All First Nations and Indigenous organizations, as well as commercial and recreational stakeholders, are invited to complete online workbooks to help to inform the cost – benefit analysis (CBA). In order for the information to be analysed for the CBA, we request that these workbooks be completed before **November 15th, 2018**.

First Nations cost – benefit analysis workbook

- [HTML version of “First Nations Cost – Benefit Analysis Workbook”](#)
-  [“First Nations Cost – Benefit Analysis Workbook” \(2018-10-01\)](#) (PDF format, SIZE KB)

Recreational sector cost – benefit analysis workbook

- [HTML version of “Recreational Sector Workbook”](#)
-  [“Recreational Sector Workbook” \(2018-10-01\)](#) (PDF format, 257 KB)

Commercial sector cost – benefit analysis workbook

- [HTML version of “Commercial Sector Workbook”](#)
-  [“Commercial Sector Workbook” \(2018-10-01\)](#) (PDF format, 387 KB)



Cost-Benefit Analysis (CBA)

- CBA performed on the specific measures which are proposed in management scenarios
- Assesses incremental costs and benefits
- For fisheries, the CBA measures economic impacts of changes in catch, effort and/or harvest patterns by different users
- CBA is one component of the regional listing information that may inform the listing decision

CBA – Costs of Listing [Preliminary]

- E.g., CBA will calculate potential impacts of proposed 60-day window closure
 - Significant impacts anticipated to several sectors
 - CBA to include estimates of harvest/catch proportions that would be affected by closures

CBA – Benefits of Listing [Preliminary]

- Potential benefits to direct users if faster recovery results in higher future harvest opportunities
- Potential benefits to Canadians if risk status lowered, and/or if recovery achieved at faster pace
 - indirect uses (such as the ecosystem services)
 - options for future use of the population
 - existence and bequest value to Canadians

Cost-Benefit Analysis (CBA)

- **Status of CBA:**

- Currently under development
- Can provide input via workbooks on consultations website:

www.dfo-mpo.gc.ca/species-especes/consultations/steelheadtrout-saumonarcenciel/index-eng.html

Regional Listing Information

Recovery Potential Assessment (In progress)

- Peer-reviewed DFO Science process covering: biology, distribution, life history, threats and limiting factors, allowable harm, recovery targets etc.

Management Scenarios (Complete)

- Outlines potential measures that may be taken if a species is, or is not, listed

Cultural Significance (In progress)

- Indigenous cultural significance of Steelhead, and FSC fisheries that encounter Steelhead (to supplement CBA below)

Cost Benefit Analysis (In progress)

- Estimates costs and benefits of listing (including species protection, recovery measures, impacts of forgone harvest for consumption)

Consultation (In progress)

- Input from First Nations, stakeholders, ENGO's and the public to inform potential listing decision

Consultations

- Consultations open until **December 2nd**:
 - Comments, questions and information provided at this meeting have been noted
 - Submit additional feedback by email, mail, or online:
 - www.dfo-mpo.gc.ca/species-especes/consultations/steelheadtrout-saumonarcenciel/index-eng.html
 - sara.xpac@dfo-mpo.gc.ca

Next Steps

1. DFO submits regional listing information
 - A. Recovery Potential Assessment
 - B. Management Scenarios
 - C. Cultural significance
 - D. Cost-Benefit Analysis
 - E. Consultations
2. Potential final listing decision
3. Regular COSEWIC assessment scheduled November 2019

Resources Available Online

- Navigate to consultation website:

www.dfo-mpo.gc.ca/species-especes/consultations/steelheadtrout-saumonarcenciel/index-eng.html



The screenshot shows the Fisheries and Oceans Canada website. The header includes the text "Fisheries and Oceans Canada" and the "Canada" logo. A navigation menu contains links for "On the water", "Fisheries", "Science and research", "Ecosystems", "Species", "Aquaculture", and "Regions". The breadcrumb trail reads "Home > Aquatic species > Consultations". The main heading is "Thompson and Chilcotin Steelhead Trout: consultation on the potential emergency listing under the Species at Risk Act". The text below explains that the Committee on the Status of Endangered Wildlife in Canada (COSEWIC) has performed an emergency assessment of both the Thompson and Chilcotin Steelhead Trout populations (or Designatable Units [DUs]) and found them to be endangered. It further states that following an emergency assessment, the Minister of Environment and Climate Change Canada (ECCC) must form an opinion on whether an imminent threat to survival exists. If the Minister is of the opinion there is an imminent threat to one or both populations of Steelhead Trout, she must recommend to Governor in Council (GiC) that the population(s) be listed on an emergency basis. Following such a recommendation, GiC would make a listing decision based on information provided by the Minister, and may consider additional information, such as socio-economic impacts and the results of consultations with Indigenous Peoples and stakeholders. To inform the GiC's decision, Fisheries and Oceans Canada (DFO) is conducting consultations on the potential impacts of listing Thompson and Chilcotin Steelhead, and collecting any additional information submitted for GiC to consider. The section "How to provide input on the Thompson and Chilcotin Steelhead emergency listing process" includes a list of links: "Species at Risk Public Registry", "Survey on the emergency listing of the Steelhead Trout (Thompson and Chilcotin populations) under the Species at Risk Act", "Survey on the emergency listing of the Steelhead Trout (Chilcotin population) under the Species at Risk Act", and "Survey on the emergency listing of the Steelhead Trout (Thompson population) under the Species at Risk Act".

QUESTIONS?

TIER 1 TIME

END

APPENDICES

Appendix A: List Scenario 60-Day Rolling Window Closure Details

Table A1. All commercial, recreational⁹ and food, social ceremonial fisheries for salmon closed in locations and times listed below.

Location Affected	Location Details		Start	End
Fraser River and Thompson ¹⁰ and Chilcotin ¹⁰ River tributaries	Fraser River – Mouth to	Sub Areas: 29-11 to 29-17	11-Sep	10-Nov
	Fraser River – Mission to Hope		12-Sep	11-Nov
	Fraser River – Hope to Sawmill Creek		16-Sep	15-Nov
	Fraser River – Sawmill Creek to Lytton (Thompson Confluence)		18-Sep	17-Nov
	Fraser River - Lytton (Thompson Confluence) to Texas Creek		21-Sep	20-Nov
	Fraser River - Texas Creek to Kelly Creek		23-Sep	22-Nov
	Fraser River - Kelly Creek to Deadman Creek		26-Sep	25-Nov
	Fraser River - Deadman Creek to Chilcotin River		29-Sep	28-Nov
	Chilcotin River		2-Oct	1-Dec ¹⁰
	Thompson River - Thompson Confluence to Bonaparte River		21-Sep	20-Nov ¹⁰
	Thompson River - Bonaparte River to Kamloops Lake		25-Sep	24-Nov ¹⁰
Strait of Georgia	Area 29	Sub Areas 1 to 5	6-Sep	5-Nov
	Area 29	Sub Areas 6 to 10	11-Sep	10-Nov
	Area 28	Sub Areas 6 to 10	6-Sep	5-Nov
	Area 18	Sub Areas 1 to 6, 9 to 11	7-Sep	6-Nov
	Area 17	Sub Areas 1 to 11, 17, 19 to 21	6-Sep	5-Nov
	Area 16	Sub Areas 1 to 4, 16 to 22	5-Sep	4-Nov
	Area 15	Sub Areas 1 to 3, 5	4-Sep	3-Nov
Johnstone Strait	Area 14	Sub Areas 6, 12, 13	4-Sep	3-Nov
	Area 13	Sub Areas 1 to 19, 23 to 41	1-Sep	31-Oct
	Area 12	Sub Areas 1 to 22, 24, 26	27-Aug	26-Oct
	Area 11	Sub Areas 1 and 2	26-Aug	25-Oct
Strait of Juan de Fuca	Area 111	All Sub Areas	25-Aug	24-Oct
	Area 19	Sub Areas 1 to 6	5-Sep	4-Nov
West Coast of Vancouver Island	Area 20	Sub Areas 1, 3 to 5	2-Sep	1-Nov
	Area 21	All Sub Areas	1-Sep	31-Oct
	Area 121	All Sub Areas	1-Sep	31-Oct
	Area 123	All Sub Areas	30-Aug	29-Oct
	Area 124	All Sub Areas	27-Aug	26-Oct
	Area 125	All Sub Areas	25-Aug	24-Oct
	Area 26	Sub Areas 1, 7, 10, 11	22-Aug	21-Oct
	Area 126	All Sub Areas	22-Aug	21-Oct
	Area 27	Sub Areas 1, 2, 4 to 6	24-Aug	23-Oct
Area 127	All Sub Areas	24-Aug	23-Oct	

⁹ Recreational closure is a finfish closure in tidal waters. In freshwater, fishing is closed with the exception of fishing for White Sturgeon.

¹⁰ Per baseline, spawning and holding areas would remain closed longer than 60 days, mirroring provincial angling closures to protect Steelhead.

Appendix B: Do Not List Scenario – Salmon Management Measures

Table B1. New management measures to mitigate impacts of salmon fisheries on Interior Fraser Steelhead included in the 2018/19 Southern Salmon Integrated Fishery Management Plan.

Sector	Fishery	Management Action
Food, Social, Ceremonial (FSC)	Johnstone Strait Chum FSC	open; options to reduce incidental impacts to steelhead through area and gear modifications to be discussed with FN's
	<u>Nitinat</u> Chum FSC	status quo - open for Chum
	Lower Fraser Chum FSC	limited gillnet openings in window closure; open time in October reduced by 50%; beach seine fisheries permitted throughout closure; closure starts between Sept 28 and October 3 depending on area
	Mid Fraser FSC	status quo - closed for IFR Coho
Recreational	Marine Recreational	status quo - open to salmon
	Lower Fraser Recreational	no fishing in window closure; closure starts between Sept 28 and October 3 depending on area
	Mid Fraser Recreational	status quo - closed to salmon for IFR Coho
Commercial (includes First Nation Economic Opportunity (FN EO))	Johnstone Strait Chum Gillnet (Area D)	no fishing in window closure closure dates: Area 12 - Sep 12 to Oct 8; Area 13 - Sept 17 to Oct 13
	Johnstone Strait Chum Purse Seine (Area B)	open with enhanced observer coverage to be discussed with Area B
	Johnstone Strait Chum Troll (Area H)	status quo - open for Chum
	<u>Nitinat</u> Chum Gillnet (Area E)	open after Sept 30; fishing area restricted to inside <u>Pachena</u> Point to Dare Point until October 15
	<u>Nitinat</u> Chum Purse Seine (Area B)	status quo - closed until October 14
	Fraser Gillnet (Area E and FN EO)	no fishing in window closure; closure starts between Sept 28 and October 3 depending on area
	Area 29 Chum Purse Seine (Area B)	no fishing in window closure closure dates from Sep 28 to Oct 24
	Fraser Selective Gear (FN EO)	no fishing in window closure; closure starts between Sept 28 and October 3 depending on area

Table B2. Start and end dates for the IFR Steelhead closure period by Management Area.

Fishery Location	Start Date	End Date
Area 11	Sep/11	Oct/07
Area 12	Sep/12	Oct/08
Area 13	Sep/17	Oct/13
Area 21/121	Sep/19	Oct/15
Subareas 29-6, 29-7, 29-9 and 29-10	Sep/28	Oct/24
Fraser River – Below Mission	Sep/28	Oct/24
Fraser River – Mission to Hope	Sep/29	Oct/25
Fraser River – Hope to Sawmill Creek	Oct/03	Oct/29
Fraser River – Sawmill Creek to Lytton	Oct/05	Dec/31
Fraser River – Lytton to Williams Lake River	Oct/12	Dec/31
Thompson River – downstream of Kamloops Lake	Oct/12	Dec/31

COSEWIC Assessments

Salmon & Steelhead

Species	No. of DU's	Assessment Date	Assessed Status
Sakinaw Lake Sockeye	1	2016 (April)	Endangered
Interior Fraser Coho	1	2016 (November)	Threatened
Okanagan Chinook	1	2017 (April)	Endangered
Fraser River Sockeye (Group I)	24*	2017 (November)	EN (9*), TH (2), SC (5)
Southern BC Chinook (Group I)	16	2018 (November)	TBD
Steelhead Trout (Thompson & Chilcotin)	2	2019 (November)	TBD
Fraser River Sockeye (Group II)	7	2019 (November)	TBD
Southern BC Chinook (Group II)	12	TBD	TBD

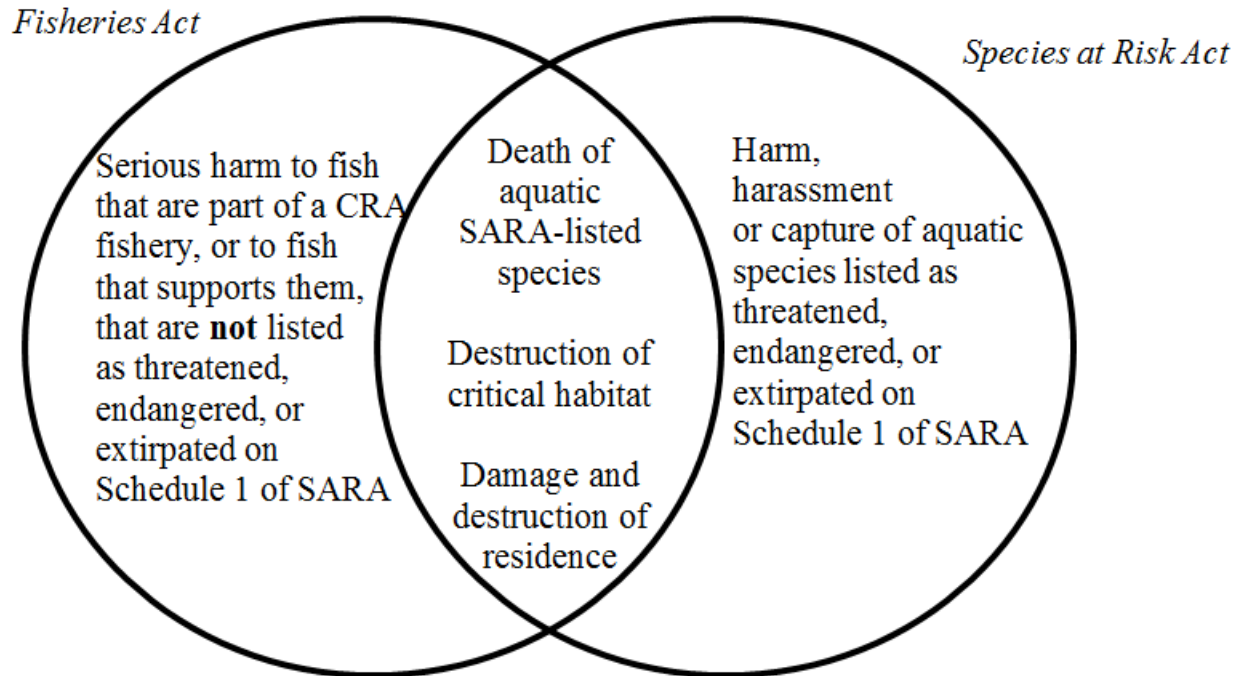
*Includes Cultus Lake Sockeye DU.

Emergency vs. Regular SARA Listing

Step	Emergency Listing (Steelhead)	Regular Listing
1. Initiation	<ul style="list-style-type: none"> Emergency COSEWIC Assessment initiated through public request 	<ul style="list-style-type: none"> Regular Assessment performed per COSEWIC's assessment schedule
2. COSEWIC assessment	<ul style="list-style-type: none"> Abbreviated, and assesses if the species is Endangered 	<ul style="list-style-type: none"> Full, detailed assessment and potential for full suite of status outcomes
3. Imminent threat opinion*	<ul style="list-style-type: none"> Minister of Environment & Climate Change (MECC) makes determination, based on COSEWIC or own information 	<ul style="list-style-type: none"> N/A
4. Recommend'n to Governor in Council (GiC)	<ul style="list-style-type: none"> If MECC is of opinion that: <ul style="list-style-type: none"> there is no imminent threat, the listing process ceases there is imminent threat, she must recommend listing 	<ul style="list-style-type: none"> MECC makes recommendation, in consultation with DFO Minister
5. Final Listing Decision by GiC	<ul style="list-style-type: none"> Final decision only Based on MECC recommendation, and regional listing info.(mgmt. scenarios, socioeconomics, consultations etc.) 	<ul style="list-style-type: none"> Proposed decision with online consultation Based on MECC recommendation, and regional listing information
6. Result	<ul style="list-style-type: none"> Species is either 1) listed on emergency basis as Endangered, or 2) not listed 	<ul style="list-style-type: none"> Species may be 1) listed, 2) not listed, or 3) referred back to COSEWIC

* Currently pending for Thompson and Chilcotin Steelhead

Overlap: SARA and the *Fisheries Act*



*Serious harm to fish is the death of fish or any permanent alteration to, or destruction of, fish habitat.

Changes to *Fisheries Act* (Habitat)

BEFORE

proposed amendments



Protection for **commercial, recreational or Aboriginal fisheries**

Uncertainty around requirements for development projects

No provisions referencing the independence of inshore fishers

No provisions specifically designed to create marine refuges

No provisions to include Indigenous participation in decision making

No provisions to restore degraded habitat and rebuild fish stocks

AFTER

proposed amendments



Protection for **all** fish and fish habitat

Clearer permitting for development projects

New ability to enshrine inshore fishing policies **into regulations**

Better ability to **protect biodiversity** in the long-term

Indigenous traditional knowledge provided **must inform** habitat decisions

Increased focus on **habitat restoration** and **rebuilding fish stocks**

Indigenous Cultural Significance

Examples: Glass Sponge Reefs MPA

Kitasoo/Xai'xais First Nation representatives maintain the following:

“The marine resources...have sustained their people since time immemorial. As a people...[they] have practiced ‘balance’ in managing their marine resources, ensuring sustain-able use that benefits current and future generations. The central sponge reef areas off of Aristazable and Price Islands are important ecological and nursery areas for many species integral to the...traditional diet. Protection of the sponge reefs would help contribute to the long term sustainability of, and access to, many [important] species”