



2016/2017 Salmon Fishery Planning

Draft Management Plan Discussion

FN Forum Meeting

March 8-10, 2016



Purpose

- This presentation is intended to provide a high level overview of the draft salmon IFMP and identify areas where changes have been made or further discussion may be required for;
 - Regional issues
 - Species Specific Fishing Plans



Outline

- Regional Items:
 - Draft IFMP - Changes to structure
 - Test fishing/ Use of Fish arrangements
 - Commercial Salmon Allocation Framework – Updates
 - Salmonid Enhancement Program (SEP) production plans
 - Environmental conditions
 - IFMP timelines
- Species Specific Salmon Fishing Plans:
 - Chinook, Coho, Sockeye, Pink, Chum/Steelhead
 - Detailed presentations to be provided separately



Draft IFMP – Changes to Layout

- New layout– reorganization of the IFMP to better describe management approaches and decision guidelines by salmon species, management units, and major fishery areas.
- Major change is NEW Section 13 – Species Fishing Plans
 - relevant information on management approach
 - includes information from previous Section 7: *Decision Guidelines and Specific Management Measures*
 - also includes Information related to First Nations, commercial and recreational fishing plans for each fishery
 - Expect to see a consistent structure and format for each section.
- No substantive changes to existing management approaches as part of this work unless otherwise identified (flagged with gray shading).



New Section 13

MANAGEMENT UNIT (E.g. Fraser Pink)

- Snapshot Overview and Map of Management Unit (including Conservation Units)
- Enhancement Information
- Stock Assessment Information
 - Salmon Outlook; Pre-Season and In-season Forecast Information
- Decision Guidelines and Management Actions
 - Previously described in section 7 of the IFMP.
- Incidental Harvest, By-catch and Constraints to Fisheries
- Allocation and Fishing Plans
 - First Nation
 - Includes FSC and Treaty domestic fishery details
 - Recreational
 - Includes changes to recreational fisheries
 - Commercial
 - Includes demonstration and FN commercial harvest fisheries (e.g. demo, harvest agreements, economic opportunities)
- Fishery Monitoring and Catch Reporting



Use of Fish Arrangements

- In 2013, DFO began using new s. 10 authorities under the *Fisheries Act* to support the Pacific salmon test fishing program.
- In this year, the PSC agreed to have the PSC Secretariat take on administration of a suite of salmon test fisheries under these new “Use of Fish” arrangements.
- In 2015, the PSC Secretariat moved away from a direct administrative role for Albion, Skeena, and Johnstone Strait Chum, and DFO worked with alternative proponents.
- Other salmon test fisheries (e.g. Barkley Sound) continue to be administered under separate JPA arrangements.



Programs proposed for 2016

Test Fisheries, Southern B.C. Salmon	Proposed Proponent	Test Fishery Purpose	Potential dates (regular program - preliminary ^a)		Potential dates (reduced sx program -		Advisory proces ^b
			Start Date	End Date	Start Date	End Date	
Area 20 GN	PSC Secr.	Fraser Sockeye / Pink	01-Jul	15-Aug	11-Jul	10-Aug	Fraser Panel (primary) FN Fr. Forum / IHPC
Area 20 SN	PSC Secr.	Fraser Sockeye / Pink	20-Jul	25-Aug	22-Jul	12-Aug	Fraser Panel (primary) FN Fr. Forum / IHPC
Cottonwood GN	PSC Secr.	Fraser Sockeye / Pink	11-Jul	15-Sep	07-Jul	01-Sep	Fraser Panel (primary) FN Fr. Forum / IHPC
Whonnock GN	PSC Secr.	Fraser Sockeye / Pink	20-Jun	30-Sep	30-Jul	15-Aug	Fraser Panel (primary) FN Fr. Forum / IHPC
Gull TR	PSC Secr.	Fraser Sockeye / Pink	NA	NA	NA	NA	Fraser Panel (primary) FN Fr. Forum / IHPC
Area 12 SN	TBD	Fraser Sockeye / Pink	20-Jul	25-Aug	21-Jul	12-Aug	Fraser Panel (primary) FN Fr. Forum / IHPC
Area 13 SN	TBD	Fraser Sockeye / Pink	20-Jul	25-Aug	TBD	TBD	Fraser Panel (primary) FN Fr. Forum / IHPC
Round Island Ck GN	TBD	Fraser Sockeye / Pink	09-Jul	15-Aug	11-Jul	10-Aug	Fraser Panel (primary) FN Fr. Forum / IHPC
Naka Ck GN	TBD	Fraser Sockeye / Pink	09-Jul	31-Jul	TBD	TBD	Fraser Panel (primary) FN Fr. Forum / IHPC
Mission GN ^d	PSC Secr.	Fraser Sockeye / Pink					
Qualark	PSC Secr.	Fraser Sockeye / Pink	01-Jul	31-Aug	01-Jul	31-Jul	Fraser Panel (primary) FN Fr. Forum / IHPC
Albion GN	3-way	Fraser	24-Apr	23-Nov			FN Fr. Forum / IHPC
Area 12 SN	Namgis / Atlegay	Mixed Stock Chum	12-Sep	30-Oct			FN Fr. Forum / IHPC
Barkley Sound SN	Hupacasath / Tseshahht	Somass Sockeye	May	June			A23 Round Table (primary) IHPC
Brooks Peninsula	TBD	WCVI Chinook	15-Jul	31-Aug			WCVI FN / Area G /IHPC

^a All dates subject to change based on in-season factors. In-season information from initial TFs important to determining timing of subsequent

^b Advisory process(es) where detailed discussion of test fisheries occurs. This does not preclude discussion and input happening through other process.

^c FN Fr. Forum = First Nations Forum on Conservation and Harvest Planning ^d Not anticipated to operate in 2015

^e 3-way arrangement between proponent, DFO and test fisherman





Test Fishing – 2016 program considerations

- Use of Fish Policy not yet formally approved
- Same test fishing projects as in recent years
- Cowichan / Saanich (chum) did not proceed in 2015, and is not expected to proceed in 2016
- DFO is considering Use of Fish arrangements for a proposed chinook assessment fishery on the Brooks Peninsula

Fraser sockeye program:

- Fraser River Panel is considering reduced program for 2016, largely in light of poor anticipated returns & financial concerns.
- Atlegay / Namgis have submitted proposal to take on administration of sockeye test fisheries in “non-panel” waters.



Allocation Projections

Test Fisheries, Southern B.C. Salmon	Total Costs (excl. in-kind)	Sockeye	Coho	Chum	Chinook	Pink
Fraser Sockeye - Full Schedule						
	\$ 1,303,000	34,000 - 94,000				70,000
Fraser Sockeye - Reduced Schedule						
	\$ 661,000	18,000- 43,000				60,000
Other Test Fisheries						
Albion GN	\$ 238,050	1,100	200	10,400	1,400	-
Area 12 SN (chum)	\$ 351,625			49,400		
Barkley Sound SN	\$ 125,000	11,000				
Brooks Peninsula	\$ 66,000				1,000	
Skeena	\$ 140,000	10,000	500	150	1,000	3,000

Notes:

- Numbers are preliminary projections and are subject to change.
- Actual test fishing catches will depend on numerous in-season factors including abundance, relative species composition, fish value
- For all but Albion / Skeena , projections are for primary species harvested only
- Skeena projection is from 2015 – expect similar #s for 2016
- For TFs where expected operating costs may exceed revenues, additional adjustments to planned programs and / or alternative arrangements may be considered to address shortfalls.



Commercial Salmon Allocation Framework

- Approved updates outlined in 2015/16 IFMP included:
 - Defined shares for commercial fleets at the species, fleet and fishery production area for a period of 5 years with provisions to review the allocations after year 4;
 - Approval of principles and operational guidelines that would form the basis of incremental testing of flexibilities (alternatives fishing locations and methods) to harvest shares, with potential for testing of pilots starting in 2016; and
 - Support for recommendations to develop a revised collaborative advisory process including First Nations economic fishery and A-H commercial marine representatives.

See Appendix 8 of last years IFMP for details



CSAF : 2016 Work

Proposed updates include:

1. Demonstration fisheries to test harvest flexibilities in 2016
 - Draft proposals for harvest flexibilities were assessed using evaluation framework developed by the Department.
 - Proposals consistent with the principles, objectives and criteria; and, where concerns can be mitigated or addressed are included in the draft 2016 IFMP for further discussion and feedback.
 - Based on any additional feedback on the draft IFMP, the Department will make final approvals of any proposals that will be included in the final salmon IFMP for testing in the 2016 fishery.
2. Updates to Interim transfer guidelines



Draft CSAF Proposals for 2016

- Potential proposals for incremental testing of flexibilities in 2016 included in draft IFMP.
- Further information and detailed proposals are available in [draft IFMP - Appendix 6](#)

Salmon Coordinating Committee	Commercial Salmon Advisory Board
<u>Northern BC:</u>	
1. <u>Central Coast hatchery chum (Heiltsuk / Kitasoo)</u>	1. Central Coast coho (Area F)
2. <u>Nass River sockeye (2 proposals from Nisga'a Lisims Government and Gitanyow)</u>	
3. <u>Skeena sockeye –Area 4 (NCSFNSS)</u>	
<u>Southern BC:</u>	
4. <u>Cowichan chum (Cowichan Tribes)</u>	3. <u>Mainland/Inlet pink & chum (Area H)</u>
	4. <u>Fraser River sockeye, pink, chum – alternate gear (Area E)</u>



Salmonid Enhancement Program (SEP)

- Preliminary production planning information is currently available at:
 - <http://www.pac.dfo-mpo.gc.ca/sep-pmvs/ifmp-pgip-eng.html>
 - see *draft IFMP Section 5.3.10*
 - final update will be available by June 1
- There are two datasets available:
 - **Post-Season Production** from the 2014 brood year (i.e. 2015 releases, and #'s on hand for 2016 release), and
 - **Production Plan**, which include proposed targets for the upcoming 2016 brood year.
- Proposals for changes to production, or updated information regarding production, are identified by a "2016" within the comment category in the SEP draft 2016 Production Plan.



Salmonid Enhancement Program (SEP)

Southern Chinook proposed changes

- **Sooke Harbour seapens:** increase Chinook production from the Sooke Harbour seapens with community partners.
 - Objective is to increase the contribution of Chinook salmon to local fisheries while maintaining an aggregate target SWVI chinook production of approximately 13M smolts by reducing an equivalent number released from Nitinat.
 - Nitinat River Chinook have been released from both the Nitinat system and the Sooke system since 1981, with seapen releases in Sooke Harbour beginning in 1992 brood year.
 - There will be a tagged group to assess contribution both to local fisheries and to adult escapement to Sooke River and any potential straying to other systems.
- **Chinook aggregate production management on East Coast of Vancouver Island:** reallocation of 200,000 fall chinook smolt production target from Quinsam River Hatchery to Puntledge River Hatchery
 - Aggregate target ECVI chinook production of approximately 14M smolts will be maintained while increasing the contribution to local recreational fisheries.
 - This increase is not expected to have impacts on Puntledge summer chinook, based on analyses of marine survival rates historically at this level of production.



Salmonid Enhancement Program (SEP)

Fraser sockeye proposed changes:

- **Pitt River sockeye:** a 2M to 1M release target adjustment to Pitt River sockeye enhancement is being proposed to align with enhancement objectives and guidelines
 - change is a result of annual production review: recent escapements have been above Wild Salmon Policy benchmarks, and enhanced contribution has been above the level outlined in program guidelines
- **Weaver Creek sockeye:** a conservation enhancement project of 25K smolts is being planned
 - spawning channel returns have been extremely low in two out of the last four years (2012, 2015) with high pre-spawn mortality. Only a few hundred females for these years compared to normal of approx. 16,000
 - 2016 return is anticipated to be extremely low as well
- **Horsefly Channel:** will not be operated in 2016
 - SEP takes into account a number of factors (including anticipated river escapement and channel productive capacity) in determining the requirement for channel operation for a given cycle/return year.



State of the Pacific Ocean and Freshwater Environmental Conditions

- Impacts of warm ocean in 2015 and El Niño in 2016 suggest survival unfavourable conditions for salmon .
 - Drought, low discharge and high temps caused widespread losses of migrating salmon adults and rearing juveniles in BC & WA State river and stream networks.
- Environmental conditions and associated uncertainties may require discussion of potential in-season additional adjustments to achieve conservation and management objectives.



2016 IFMP Timelines:

<u>Activity</u>	<u>2015/2016 Proposed Timeline</u>
Salmon Outlook report for 2016	November 25, 2015
Post Season Meetings for North and South Coasts	NC – December 4, 2015 SC – December 11, 2015
NEW –DFO summary of key changes proposed and discussion items for IFMP development circulated to advisory groups (IHPC, SCC and Forum) for review.	January 12, 2016
Deadline for written submissions from advisory groups to identify additional discussion items for the 2016/2017 Salmon IFMPs building on the DFO’s summary of key IFMP changes provided.	January 28, 2016
Integrated Harvest Planning Committee Meeting/First Nation meetings to discuss the summary of key IFMP updates and other suggested changes that require consultation and/or science work.	February, 2016 NC and SC IHPC meetings – February 3, 2016
Release of draft IFMP for review & comment	First week of March 2016
IHPC/First Nation meetings to review draft IFMP	March 2016 NC and SC IHPC meetings – March 10, 2016
Deadline to submit comments on draft IFMP (30 day public comment period)	April 18, 2016
Final IHPC Meeting	April 28/29 th , 2016
Target for public release of 2016/17 salmon IFMP (current IFMP in place June 1, 2015 to May 31, 2016)	June 2016



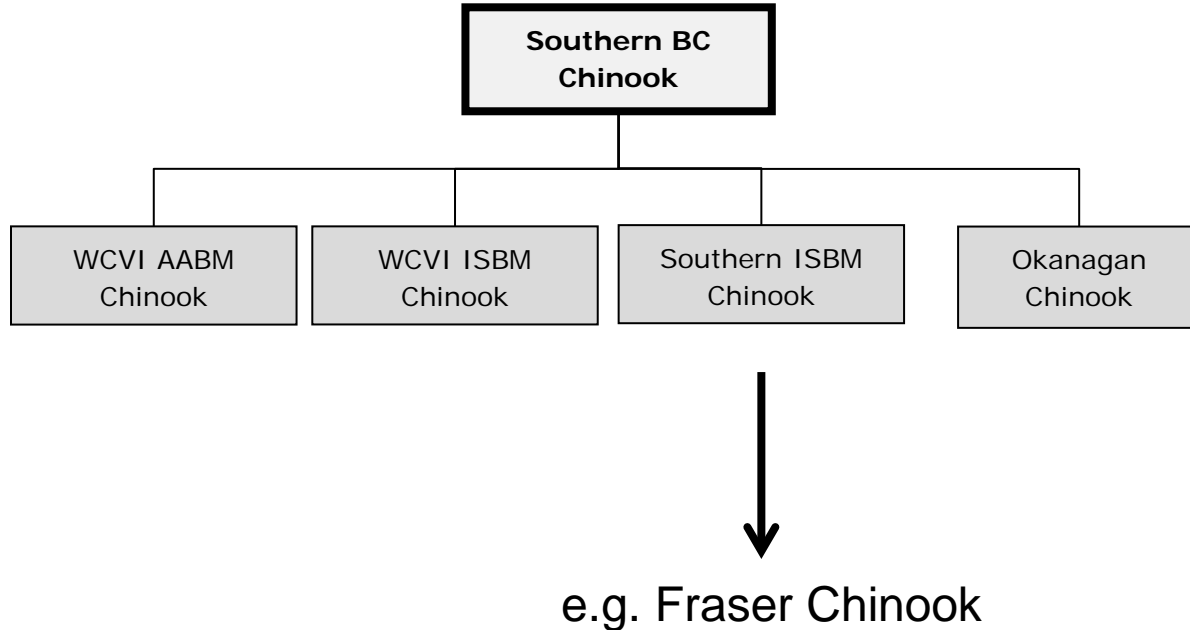
Species Specific Fishing Plans

High level overview of key issues /
changes in draft IFMP

- Separate presentations for sockeye,
chinook, coho and chum



Southern BC Chinook



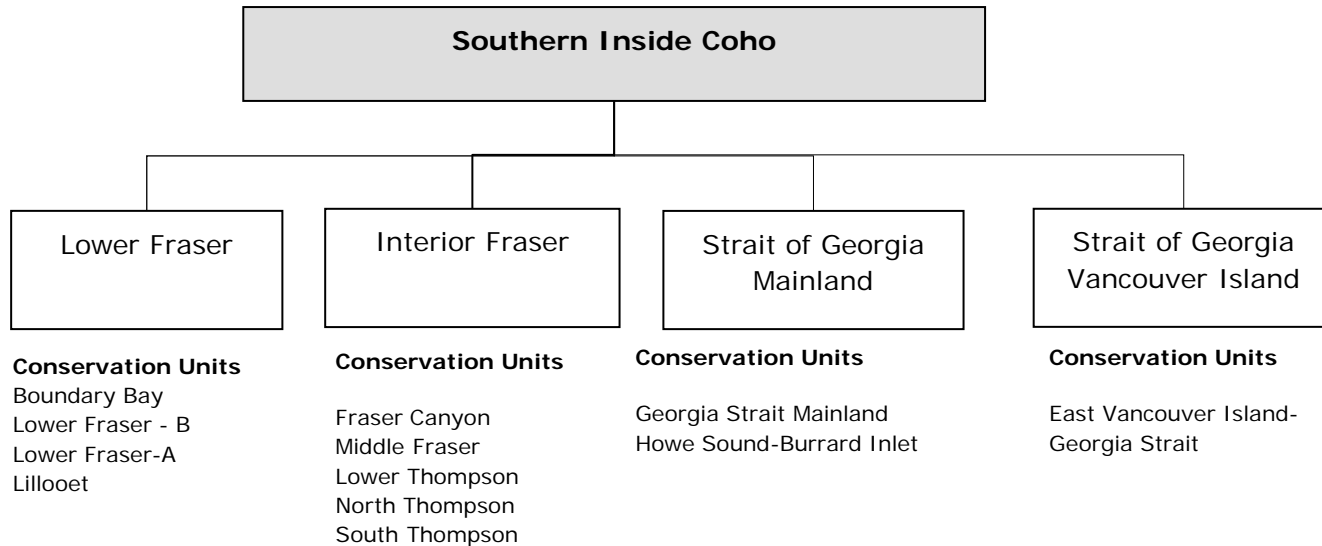


Southern BC Chinook

- **Spring 4₂, Spring and Summer 5₂ chinook:** Continued need for management actions to conserve and rebuild
 - Fisheries to be informed by management zone approach and in-season assessment based on Albion test fishery information for Spring and Summer 5₂.
 - Proposed change to potential chinook retention in the Fraser River recreational fishery to beginning of August (previously July 15).
 - Juan de Fuca recreational fishery: Department has received proposals from the SFAB and First Nations seeking a review of management actions in this area. Further discussions are required.
- **Fraser Summer 4₁:** fishery planning focus will be on avoiding increasing impacts.
- **Fraser Fall (Harrison):** when forecast returns are below the escapement goal range, chinook non-retention in commercial fisheries in the Fraser River and recreational fisheries on the Harrison River.



Southern Coho



Note: There are also 4 conservation units in the Johnstone Strait area including: Homathko-Klinaklini Rivers; Nahwitti Lowland; East Vancouver Island-Johnstone Strait-Southern Fjords; and Southern Coastal Streams-Queen Charlotte Strait-Johnstone Strait-Southern Fjords.

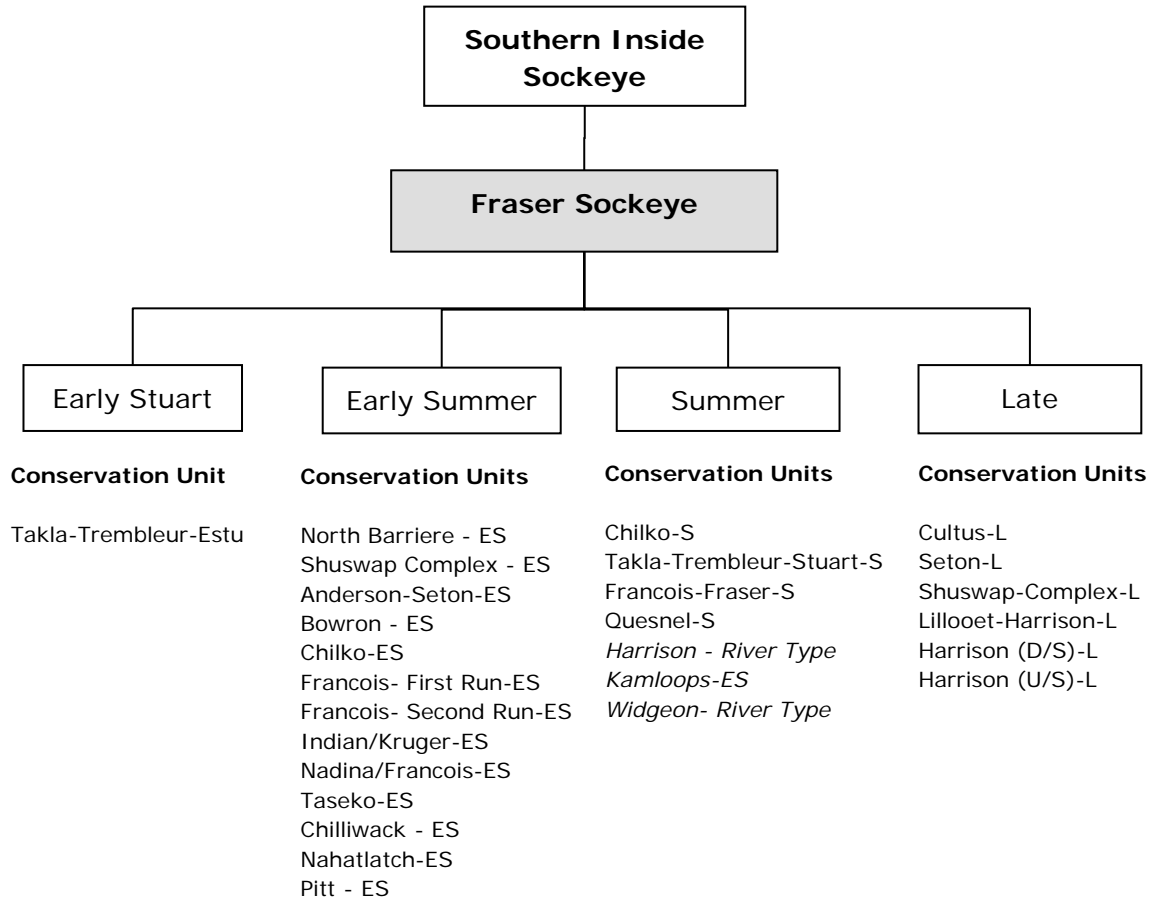


Southern Coho

- Survival rates remain variable and are well below historic highs in most areas; still in *low productivity regime* requiring lower exploitation rates.
- Interior Fraser Coho are key constraint on management of Southern BC fisheries; in addition, IFR coho management actions benefit other southern coho populations.
- To further advance recovery and conservation, the objective is to manage Canadian fisheries in a highly precautionary manner with fisheries management measures similar to those in place prior to 2014.
- Updated IFR coho management objective:
 - The objective for Interior Fraser River coho (including Thompson River coho) is to manage Canadian fisheries in a highly precautionary manner with fisheries management measures similar to those in place prior to 2014. This approach is expected to achieve an overall exploitation rate within the 3 – 5 % range.



Fraser Sockeye



Note: *italicized* CUs have been managed as part of the Summer run aggregate since the 2012 season.

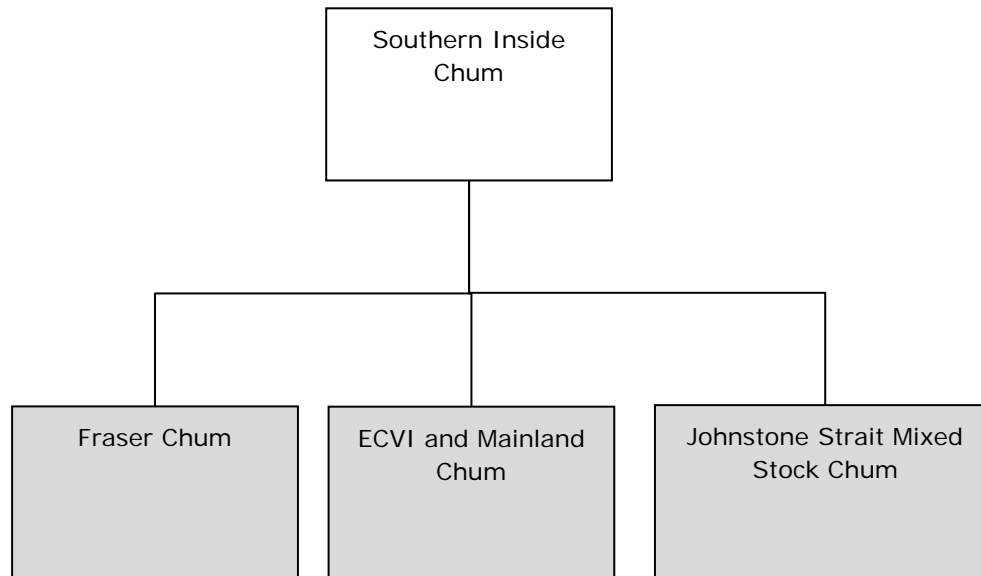


Fraser Sockeye

- Management approach based on abundance based harvest rules for 4 management units: Early Stuart, Early Summer, Summer and Late run.
- 2 escapement plan options included in the draft IFMP for review.
- Harvests will also be constrained by stocks of concern (e.g. Cultus Lake and Sakinaw Lake sockeye).
- Expected poor returns of *Early Stuart* and other Fraser populations will require discussion of window closure period and other management constraints.
- Actual fishery opportunities based on in-season assessment of abundance information including test fisheries, hydro acoustics, and stock identification sampling.
 - Discussion required on opportunities to limit test fishery impacts in event of low returns for 2016



Southern Inside Chum





Southern Inside Chum

JS Mixed Stock Chum

- Management plan based on 20% exploitation rate in mixed-stock Johnstone Strait fishery.
 - in season fishery provides indications of relative chum abundance, migration timing, stock compositions, and other biological information.
 - Conservation threshold of 1 million below which commercial harvests are suspended.

ECVI and Mainland Chum

- Harvest opportunities primarily in terminal areas based on decision rules, escapement targets and local abundance.

Fraser chum

- Management approach similar to recent years anticipated using information from Albion test fishery to estimate in-season return abundance.
 - 800,000 escapement target for the Fraser River chum
 - Fisheries constrained by stocks of concern including coho and steelhead

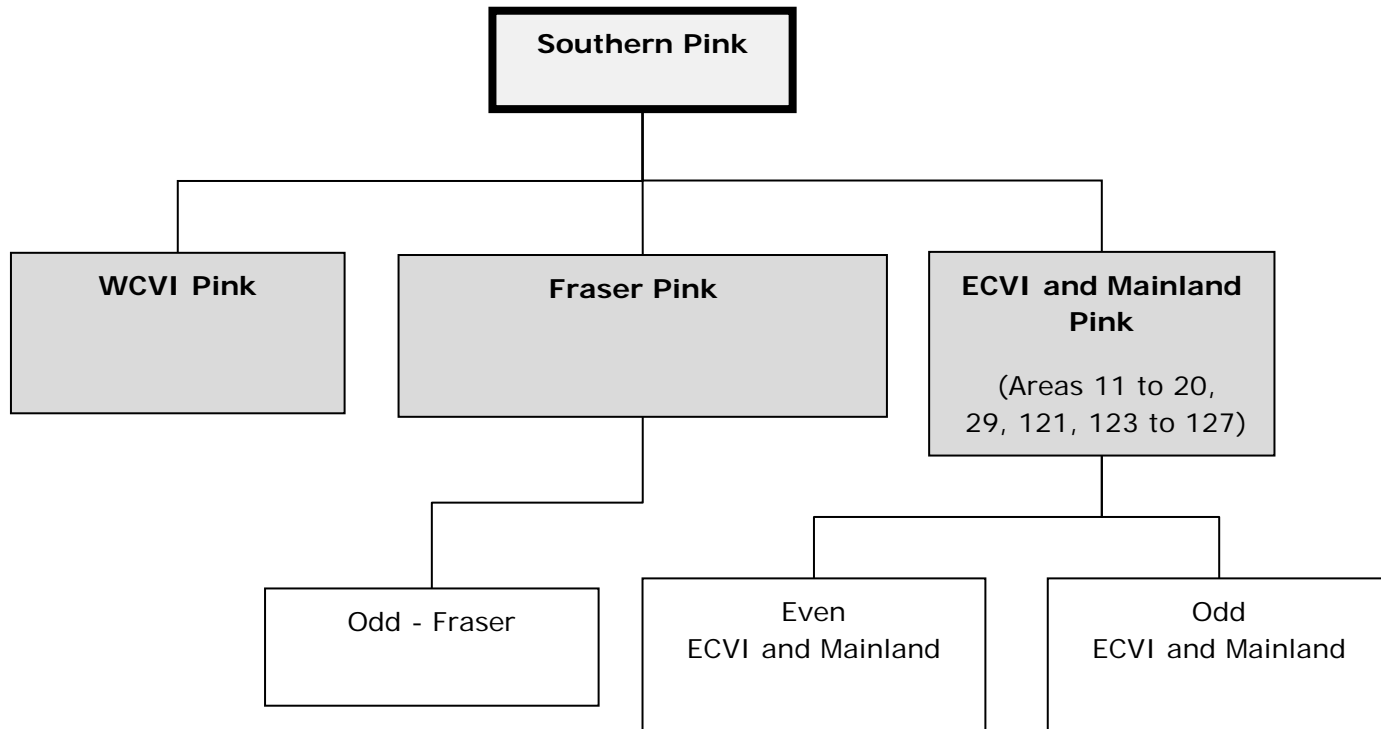


Interior Fraser Steelhead

- Concerns about the low status of IFR steelhead and, in particular, 2015 returns
- Objective updated to clarify DFO approach:
 - *The objective for Interior Fraser River steelhead is to minimize the impact of Canadian fisheries managed by DFO taking into account conservation concerns for these populations.*
- DFO continues to work with Province of B.C. on this issue.
- Some areas for discussion:
 - is the current management approach in the IFMP appropriate?
 - What information is available on fisheries impacts?
 - How to best respond to in-season information on IFR steelhead returns?
- Specific proposals for changes to the IFMP have not been developed.



Southern Pink





Southern Pink

- No substantive IFMP changes proposed at this time.
- Fraser River pink: Off-cycle year; insignificant abundance of pink salmon return to the Fraser River in even numbered years.
- Other southern BC pink: Average to below average returns are expected for other Southern British Columbia populations
 - Areas 11 to 13 and Georgia Strait – *low to near target* – Local pink abundances may provide opportunities for directed harvest.
 - Squamish pink salmon – *data deficient*. Insignificant abundance of pink salmon return to the Squamish River in even numbered years.



Appendix



Test Fishing - 2007 to 2015

- Summary of administrative arrangements for test fisheries having some level of PSC involvement

Category	#	Test Fishery Name	PST Chapter Reference	Geographic Area	Species	Administered by				
						Pre 2007	Laroque 2007 - 2012	2013, 2014	2015	
Panel Approved	Panel Waters	1	Area 7 Reef Net	Fraser	San Juan Islands	Sockeye/Pink	PSC	PSC	PSC	PSC
		2	Area 5 Gill Net	Fraser	Juan de Fuca	Sockeye/Pink	PSC	PSC	PSC	PSC
		3	Area 20 Seine	Fraser	Juan de Fuca	Sockeye/Pink	PSC	PSC	PSC	PSC
		4	Area 20 Gill Net	Fraser	Juan de Fuca	Sockeye/Pink	PSC	PSC	PSC	PSC
		5	Whonnock Gill Net	Fraser	Fraser River	Sockeye/Pink	PSC	PSC	PSC	PSC
		6	Cottonwood Gill Net	Fraser	Fraser River	Sockeye/Pink	PSC	PSC	PSC	PSC
		7	Gull Troll	Fraser	S. Georgia Strait	Sockeye/Pink	PSC	PSC	PSC	PSC
		8	Mission Gill Net	Fraser	Fraser River	Sockeye/Pink	PSC	PSC	PSC	PSC
	Non-Panel	9	Round Island and Naka Creek Gill Net	Fraser	Johnstone Strait	Sockeye/Pink	DFO	PSC	PSC	PSC
		10	Blinkhorn Seine	Fraser	Johnstone Strait	Sockeye/Pink	DFO	PSC	PSC	PSC
		11	Area 13 Seine	Fraser	Johnstone Strait	Sockeye/Pink	DFO	PSC	PSC	PSC
		12	Qualark Gill Net	Fraser	Fraser River at Yale	Sockeye/Pink	DFO	DFO	PSC	PSC
Other	13	Skeena Gill Net	Northern	Skeena River	All	DFO	PSC	PSC	NCSFNSS	
	14	Albion Gill Net	Southern	Fraser	Chinook/Chum	DFO	PSC	PSC	3-way trans'l	
	15	Area 12 Chum Seine	Southern	Johnstone Strait	Chum	DFO	DFO	PSC	Namgis/A'tlegay	